



# Chapel Pointe Apartments

## FLOOR PLANS AND RATES

2024

### MONTHLY FEE

This simple payment consolidates your bills and keeps your life maintenance-free.

- 24/7 emergency response system
- Air conditioning & heat
- Electricity
- Fire extinguisher
- Home maintenance, inside & out
- Housekeeping of common areas
- Maintenance of supplied appliances
- Landscaping & lawn care
- On-site storage
- Property insurance
- Real estate taxes
- Road maintenance & snow removal
- Scheduled shopping shuttle
- Trash removal
- Water & sewer
- Wi-Fi in common areas
- Access to on-site amenities, plus a calendar of activities
- Community App account for on-demand access to events, menus, people, & services

#### For an additional fee, add:

- Cable TV - \$32/mo.
- Meals - \$6.75-\$9.75
- Home care - \$32/hour
- Internet - \$23/mo.



*We want you to feel confident about your future, so we've structured our rates so you gain financial, physical, and emotional security. You have freedom to select the plan that best meets your needs, knowing that no matter what option you choose, you will have priority access to Chapel Pointe's full continuum of services.*

### OPTION 1 (MOST POPULAR): ENTRANCE FEE PLAN

This partially refundable entrance fee allows you to pay more up front so you can enjoy a lower monthly fee.

It also offers additional financial security because, if you permanently leave your apartment within the first five years, you will receive a partial refund, which is amortized at approximately 20 percent per year.

### OPTION 2: MODIFIED ENTRANCE FEE PLAN

The Modified Entrance Fee Plan is a hybrid of the Entrance Fee Plan (option 1) and Full Rental Plan (option 3). You pay a smaller lump sum up front and make up the cost difference by paying a larger monthly fee than the regular Entrance Fee Plan offers.

The Modified Entrance Fee is also partially refundable at approximately 20 percent per year within the first five years of living at Chapel Pointe.

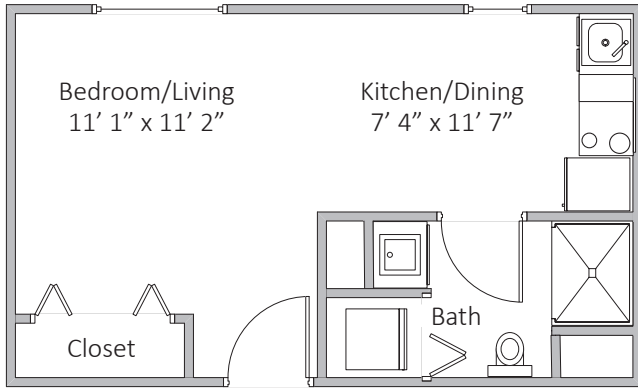
### OPTION 3: FULL RENTAL PLAN

Through the Full Rental Plan, you pay the largest monthly fee, but in exchange, you do not pay an entrance fee upon moving to Chapel Pointe.

# CHAPEL POINTE APARTMENT FLOOR PLANS

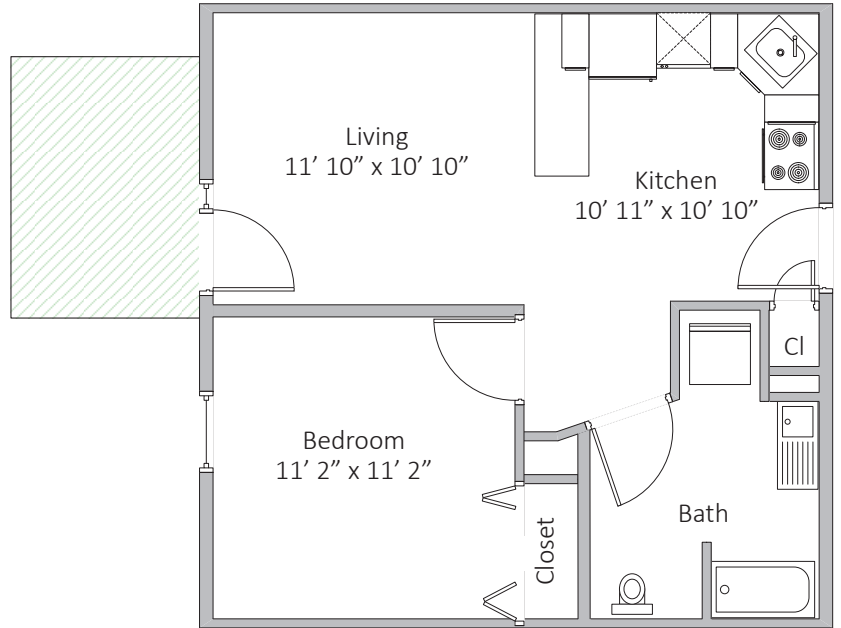
## BEDFORD TERRACE AND CORNERSTONE MANOR

Efficiency | 312 sq. ft.



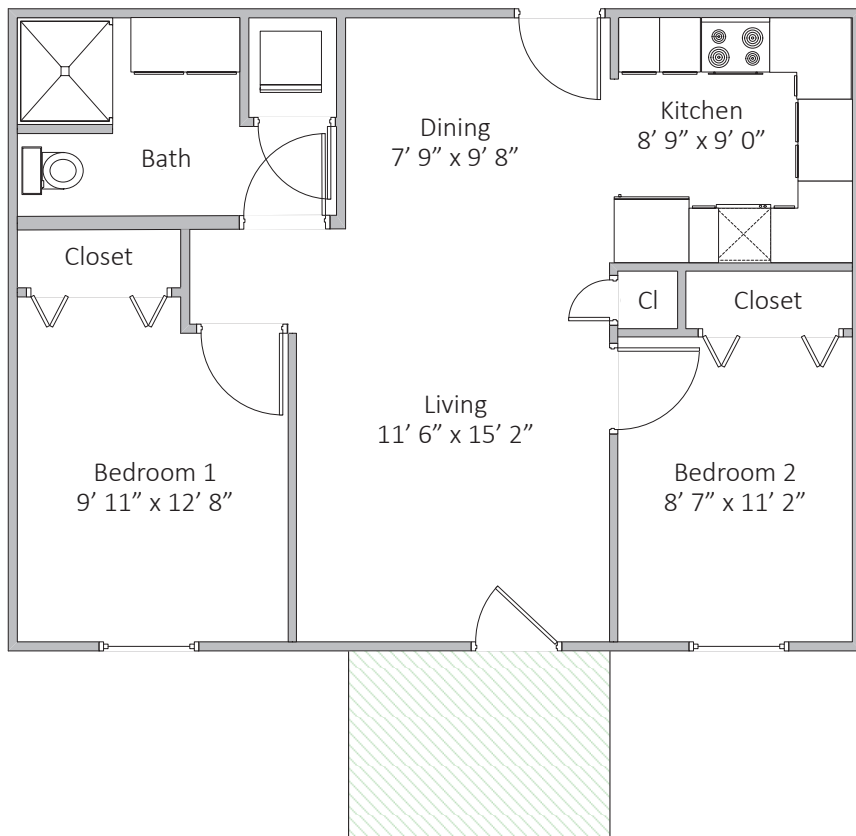
## BEDFORD TERRACE AND CORNERSTONE MANOR

One Bedroom | 527 sq. ft.



## BEDFORD TERRACE AND CORNERSTONE MANOR

Two Bedrooms | 702 sq. ft.



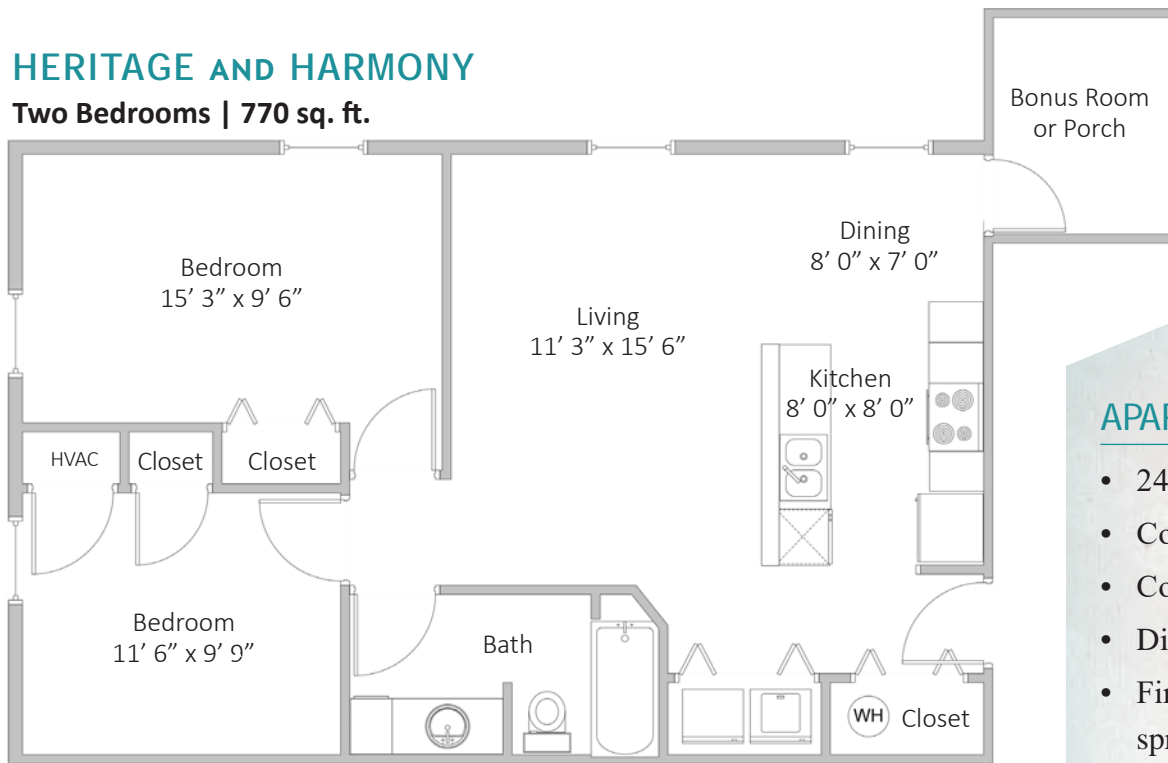
*"We enjoy independent living and the freedom to go and come as we please. We enjoy the peace of mind that continuing care provides. If we had to do it all over again, ... we would have made our decision to come here several years earlier."*

- The Schleh, residents



## HERITAGE AND HARMONY

Two Bedrooms | 770 sq. ft.

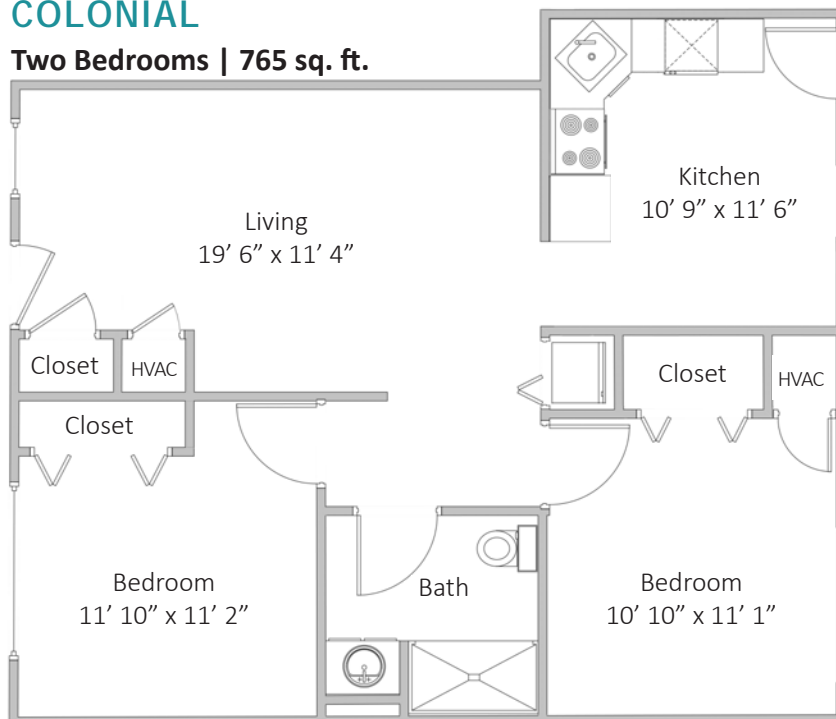


### APARTMENT FEATURES

- 24/7 Medical alert system
- Comfort-height toilets
- Cooking range
- Dishwasher
- Fire detection system & sprinklers
- Individually controlled temperature
- Key-fob main entrance (for applicable buildings)
- Microwave
- Outdoor video surveillance of property
- Parking space
- Refrigerator/freezer
- Single-story living
- Storage- & safety-conscious cabinetry design
- Washer & dryer
- Walk-in shower with seat & grab bars

## COLONIAL

Two Bedrooms | 765 sq. ft.





# 2024 CHAPEL POINTE APARTMENT RATES

COLONIAL	FULL ENTRANCE FEE PLAN			MODIFIED ENTRANCE FEE PLAN			FULL RENTAL PLAN	
	ENTRANCE FEE	MONTHLY FEE		ENTRANCE FEE	MONTHLY FEE		MONTHLY FEE	
		Single	Double		Single	Double	Single	Double
One bedroom	\$110,000	\$935	\$1,210	\$55,000	\$1,821	\$2,096	\$2,707	\$2,982
Two bedroom	\$138,000	\$965	\$1,240	\$69,000	\$2,076	\$2,351	\$3,187	\$3,462
Two bedroom / two bath	\$142,000	\$965	\$1,240	\$71,000	\$2,109	\$2,384	\$3,252	\$3,527

BEDFORD TERRACE	FULL ENTRANCE FEE PLAN			MODIFIED ENTRANCE FEE PLAN			FULL RENTAL PLAN	
	ENTRANCE FEE	MONTHLY FEE		ENTRANCE FEE	MONTHLY FEE		MONTHLY FEE	
		Single	Double		Single	Double	Single	Double
Efficiency	\$86,000	\$900	N/A	\$43,000	\$1,593	N/A	\$2,285	N/A
One bedroom	\$116,000	\$935	\$1,210	\$58,000	\$1,869	\$2,144	\$2,803	\$3,078
Two bedroom	\$141,000	\$965	\$1,240	\$70,500	\$2,101	\$2,376	\$3,236	\$3,511
Two bedroom - corner	\$143,000	\$965	\$1,240	\$71,500	\$2,117	\$2,392	\$3,268	\$3,543

CORNERSTONE MANOR	FULL ENTRANCE FEE PLAN			MODIFIED ENTRANCE FEE PLAN			FULL RENTAL PLAN	
	ENTRANCE FEE	MONTHLY FEE		ENTRANCE FEE	MONTHLY FEE		MONTHLY FEE	
		Single	Double		Single	Double	Single	Double
Efficiency	\$80,000	\$900	N/A	\$40,000	\$1,544	N/A	\$2,188	N/A
One bedroom	\$110,000	\$935	\$1,210	\$55,000	\$1,821	\$2,096	\$2,707	\$2,982
Two bedroom	\$134,000	\$965	\$1,240	\$67,000	\$2,044	\$2,319	\$3,123	\$3,398
Two bedroom - corner	\$135,000	\$965	\$1,240	\$67,500	\$2,052	\$2,327	\$3,139	\$3,414

HARMONY AND HERITAGE	ENTRANCE FEE PLAN			MODIFIED ENTRANCE FEE PLAN			FULL RENTAL PLAN	
	ENTRANCE FEE	MONTHLY FEE		ENTRANCE FEE	MONTHLY FEE		MONTHLY FEE	
		Single	Double		Single	Double	Single	Double
Two bedroom	\$138,000	\$965	\$1,240	\$69,000	\$2,076	\$2,351	\$3,187	\$3,462

Rates are subject to change to account for the cost-of-living adjustment.

To schedule your personal tour,  
call 717-249-1363.

[www.ChapelPointe.org](http://www.ChapelPointe.org) | [info@chapelpointe.org](mailto:info@chapelpointe.org) | 770 S. Hanover Street, Carlisle, PA 17013