



Courtyard Apartments

FLOOR PLANS AND RATES

2023



To schedule your personal tour, call 717-249-1363.

www.ChapelPointe.org | info@chapelpointe.org | Cambridge Court, Carlisle, PA 17013

APARTMENT FEATURES

- 24/7 Medical alert system
- 2 Bedrooms & 2 Bathrooms
- Building elevator
- Built-in storage
- Comfort-height toilets
- Cooking range
- Courtyard access
- Dishwasher
- Fire detection system
- Garbage disposal
- High-end finishes
- Individually controlled thermostats
- Meganite® countertops
- Microwave
- One-car garage
- Open-concept floor plan
- Pet-free
- Refrigerator/freezer with water & ice dispenser
- Storage- & safety-conscious cabinetry design
- Sunroom with beautiful view
- Washer & dryer
- Walk-in master closet
- Walk-in shower with seat & grab bars

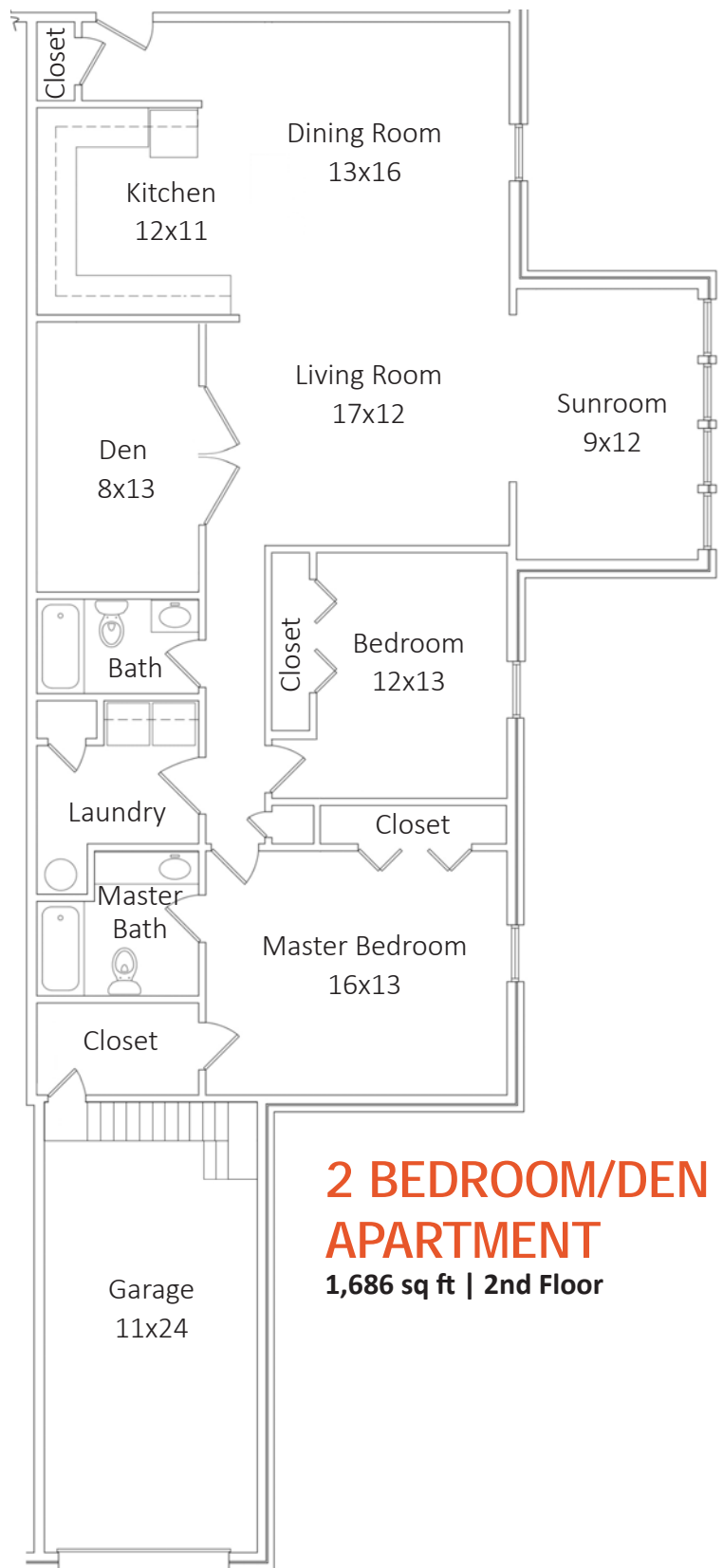
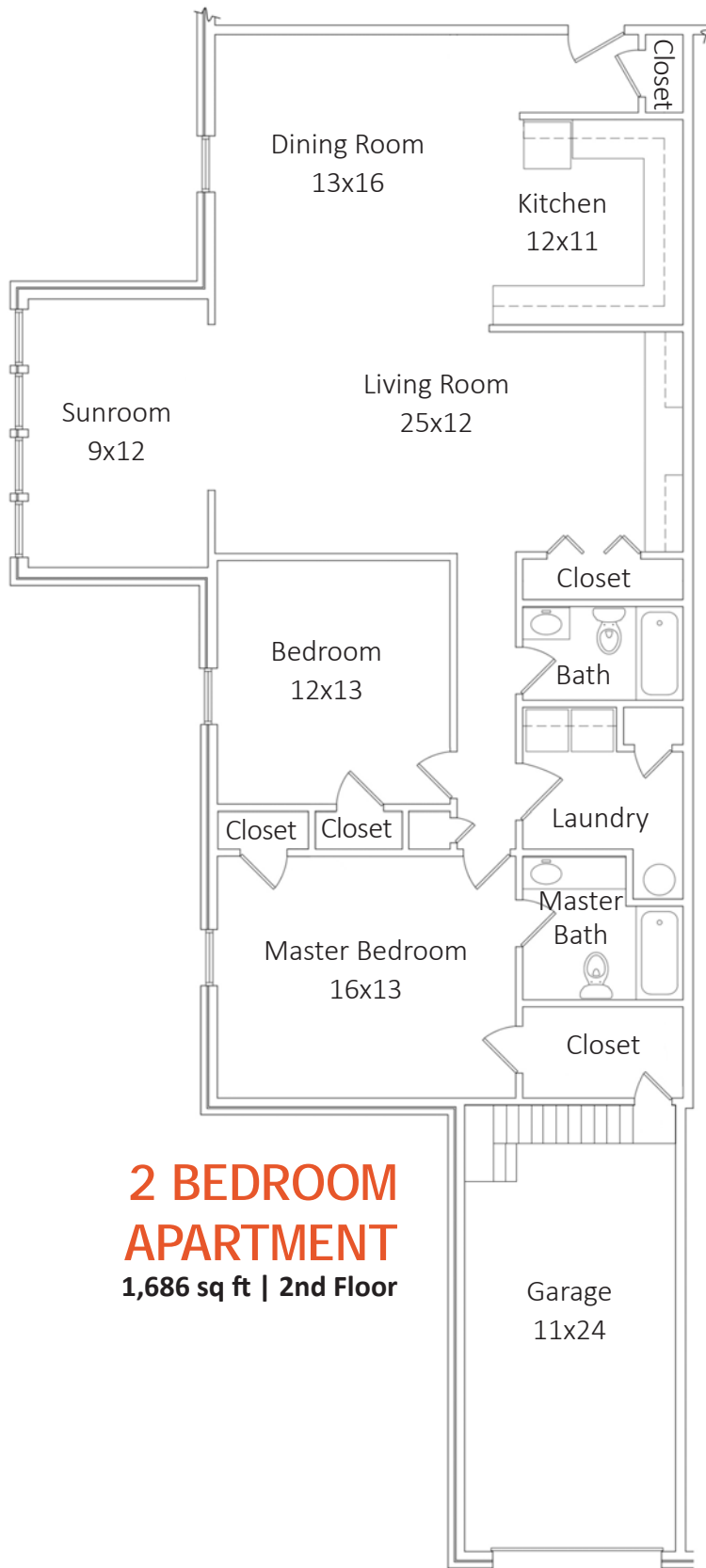


LIVING NEXT TO POINTE PLACE AT CAMBRIDGE COURT

A close-knit and active senior apartment community, Cambridge Court has become a Carlisle staple that's home to people who make a difference in the world around them. For the first time ever, when you move to one of our Courtyard Apartments, you join two great communities – Cambridge Court and Chapel Pointe – and lock in security for your future. Residents of the Courtyard Apartments enjoy:

- A spacious and completely renovated apartment with premium finishes and features to promote aging in place.
- Maintenance-free and landscaping-free living.
- Use of Cambridge Courts' beautifully landscaped campus, the Pointe Place Community Center (pictured below), and a daily shuttle to give you access to all of Chapel Pointe's activities and amenities.
- Walking distance to wooded paths, gardens, restaurants, a gym, and Carlisle's culturally-rich downtown.
- Access to Chapel Pointe's services and full continuum of care just two miles away, which ensures the care you need no matter what the future holds.





WE'VE SIMPLIFIED MOVING!

When you reserve a Courtyard Apartment, you'll receive **20 hours of free downsizing assistance**. Plus, we've doubled our move-in time, so you'll have **6 full months to move!**

MONTHLY FEE

This simple payment keeps your life maintenance-free and includes your utilities:

Resident Favorites

- 24/7 medical alert system notifies professionals for quick medical attention
- 24/7 fire response system
- Landscaping & lawn care
- Home maintenance, inside & out
- Use of the Pointe Place Community Center & Cambridge Court Picnic Patio
- A calendar of social & recreational activities
- Community App account for on-demand access to events, menus, people, & services

Monthly Fee Also Includes

- Air conditioning & heat
- Electricity
- Home Owners Association Fees
- Insurance consultant
- Maintenance of supplied appliances
- Property insurance
- Real estate taxes
- Road maintenance & snow removal
- Scheduled shuttle transit
- Trash removal
- Water & sewer

Available For An Added Fee

- Meals - \$6.50-\$9.50
- Home care - \$29/hour

(TV, phone, and internet contracted independently)



ENTRANCE FEE PLAN

We want you to feel confident about your future, so we've structured our rates so you gain financial, physical, and emotional security.

The Courtyard Apartments operate under a partially refundable entrance fee plan. The entrance fee is like an insurance policy; it allows you to buy in to Chapel Pointe's continuum of care. You gain the assurance that you have priority access to health care services if you ever need them. Each month, you also pay a monthly fee which covers utilities and more.

Your financial security has three elements:

- If you move out of your townhome up to five years after moving in, you will receive a partial refund of your entrance fee.
- We group your major expenses into one monthly fee, so you can expect a consistent cost of living regardless of the national economic climate.
- Because of Chapel Pointe's benevolence ministry, if you run out of funds, the entrance fee you paid guarantees that you will always have a home through Chapel Pointe.

COURTYARD APARTMENT RATES	ENTRANCE FEE PLAN		
	ENTRANCE FEE	MONTHLY FEE	
		Single	Double
First floor apartment	\$205,000	\$1,275	\$1,525
Second floor apartment	\$195,000	\$1,275	\$1,525

Rates are subject to change to account for the cost-of-living adjustment.