



Chapel Pointe Apartments

FLOOR PLANS AND RATES

2025

MONTHLY FEE

This simple payment consolidates your bills and keeps your life maintenance-free.

- 24/7 emergency response system
- Air conditioning & heat
- Basic Internet
- Electricity
- Fire extinguisher
- Home maintenance
- Housekeeping of common areas
- Maintenance of supplied appliances
- Landscaping & lawn care
- On-site storage
- Property insurance
- Real estate taxes
- Road maintenance & snow removal
- Scheduled shopping shuttle
- Trash removal
- Water & sewer
- Access to on-site amenities, plus a calendar of activities
- Community App account for on-demand access to events, menus, people, & services

For an additional fee, add:

- Cable TV - \$32/mo.
- High-Speed Internet - \$23/mo.
- Home care/housekeeping - \$33/hr.
- Meals - \$6.90-\$10

(Phone contracted independently.)



We want you to feel confident about your future, so we've structured our rates so you gain financial, physical, and emotional security. You have freedom to select the plan that best meets your needs, knowing that no matter what option you choose, you will have priority access to Chapel Pointe's full continuum of services.

OPTION 1 (MOST POPULAR): ENTRANCE FEE PLAN

This partially refundable entrance fee allows you to pay more up front so you can enjoy a lower monthly fee.

It also offers additional financial security because, if you permanently leave your apartment within the first five years, you will receive a partial refund, which is amortized at approximately 20 percent per year.

OPTION 2: MODIFIED ENTRANCE FEE PLAN

The Modified Entrance Fee Plan is a hybrid of the Entrance Fee Plan (option 1) and Full Rental Plan (option 3). You pay a smaller lump sum up front and make up the cost difference by paying a larger monthly fee than the regular Entrance Fee Plan offers.

The Modified Entrance Fee is also partially refundable at approximately 20 percent per year within the first five years of living at Chapel Pointe.

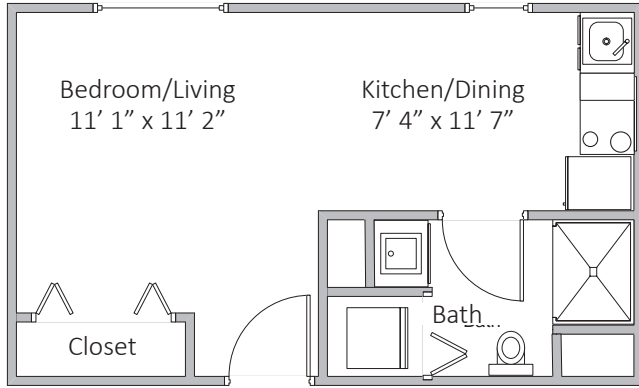
OPTION 3: FULL RENTAL PLAN

Through the Full Rental Plan, you pay the largest monthly fee, but in exchange, you do not pay an entrance fee upon moving to Chapel Pointe.

CHAPEL POINTE APARTMENT FLOOR PLANS

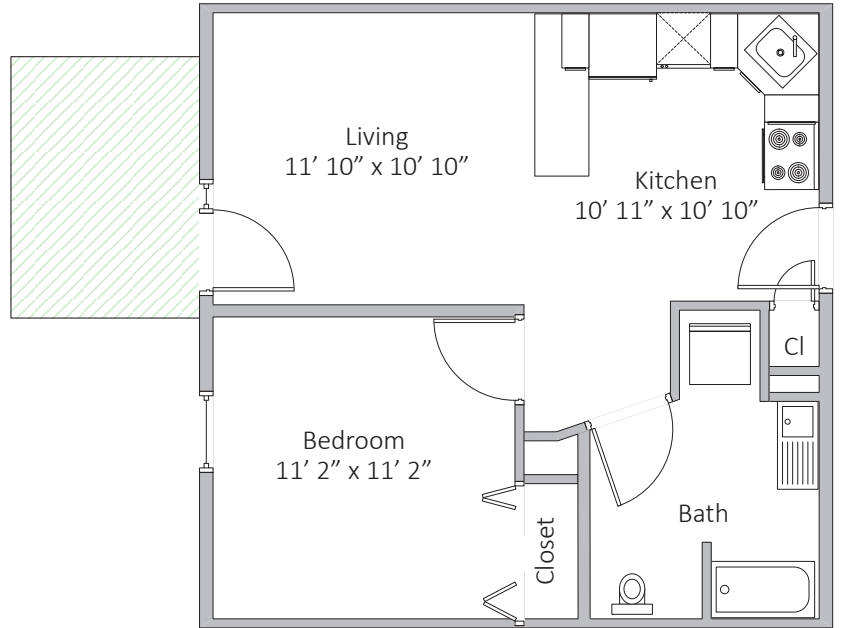
BEDFORD TERRACE AND CORNERSTONE MANOR

Efficiency | 312 sq. ft.



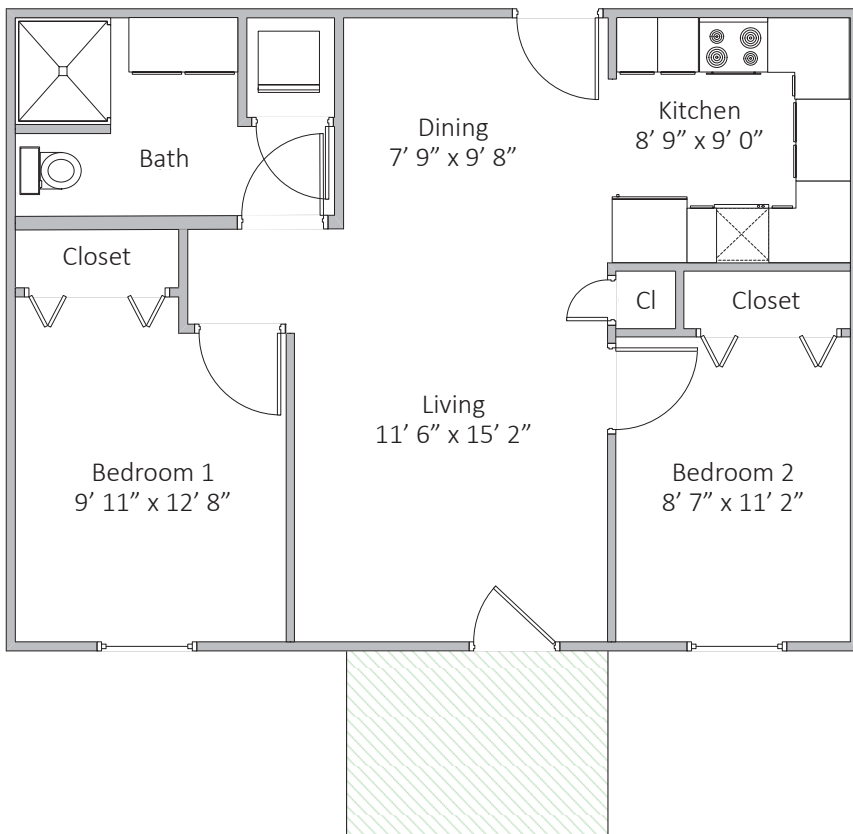
BEDFORD TERRACE AND CORNERSTONE MANOR

One Bedroom | 527 sq. ft.



BEDFORD TERRACE AND CORNERSTONE MANOR

Two Bedrooms | 702 sq. ft.

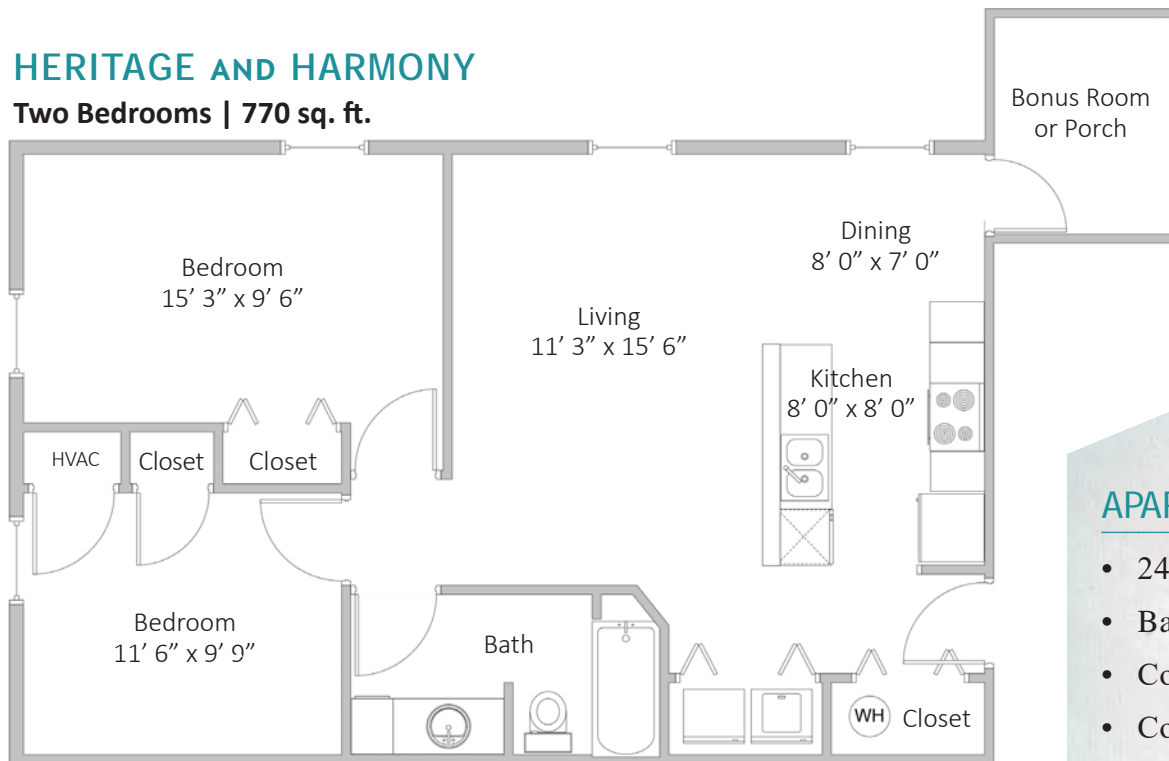


"We enjoy independent living and the freedom to go and come as we please. We enjoy the peace of mind that continuing care provides. If we had to do it all over again, ... we would have made our decision to come here several years earlier."
- The Schlehs, residents



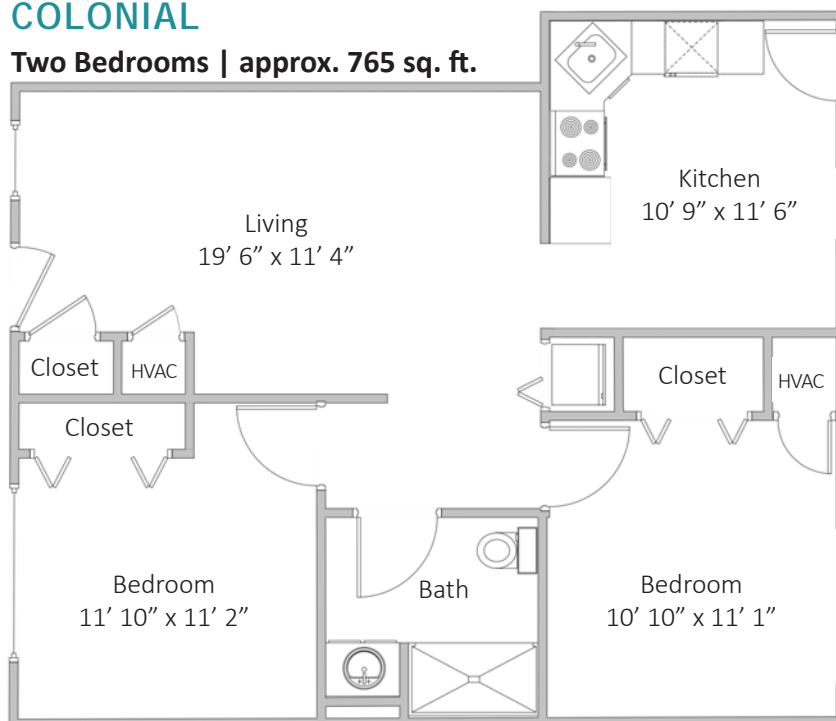
HERITAGE AND HARMONY

Two Bedrooms | 770 sq. ft.



COLONIAL

Two Bedrooms | approx. 765 sq. ft.



APARTMENT FEATURES

- 24/7 Medical alert system
- Basic Internet
- Comfort-height toilets
- Cooking range
- Dishwasher
- Fire detection system
- Key-fob main entrance (for applicable buildings)
- Microwave
- Outdoor video surveillance of property
- Parking space
- Refrigerator/freezer
- Single-story living
- Storage- & safety-conscious cabinetry design
- Washer & dryer
- Walk-in shower with seat & grab bars



CHAPEL POINTE APARTMENT RATES

COLONIAL	FULL ENTRANCE FEE PLAN		
	ENTRANCE FEE	MONTHLY FEE	
		Single	Double
One bedroom	\$113,000	\$960	\$1,260
Two bedroom	\$145,000	\$990	\$1,290
Two bedroom / two bath	\$148,000	\$990	\$1,290

MODIFIED ENTRANCE FEE PLAN		
ENTRANCE FEE	MONTHLY FEE	
	Single	Double
\$56,500	\$1,870	\$2,170
\$72,500	\$2,158	\$2,458
\$74,000	\$2,182	\$2,482

FULL RENTAL PLAN	
MONTHLY FEE	
Single	Double
\$2,780	\$3,080
\$3,325	\$3,625
\$3,374	\$3,674

BEDFORD TERRACE	FULL ENTRANCE FEE PLAN		
	ENTRANCE FEE	MONTHLY FEE	
		Single	Double
Efficiency	\$88,000	\$925	N/A
One bedroom	\$121,000	\$960	\$1,260
Two bedroom	\$147,000	\$990	\$1,290
Two bedroom - corner	\$149,000	\$990	\$1,290

MODIFIED ENTRANCE FEE PLAN		
ENTRANCE FEE	MONTHLY FEE	
	Single	Double
\$44,000	\$1,632	N/A
\$60,500	\$1,935	\$2,235
\$73,500	\$2,174	\$2,474
\$74,500	\$2,190	\$2,490

FULL RENTAL PLAN	
MONTHLY FEE	
Single	Double
\$2,342	N/A
\$2,909	\$3,209
\$3,357	\$3,657
\$3,390	\$3,690

CORNERSTONE MANOR	FULL ENTRANCE FEE PLAN		
	ENTRANCE FEE	MONTHLY FEE	
		Single	Double
Efficiency	\$87,000	\$925	N/A
One bedroom	\$115,000	\$960	\$1,260
Two bedroom	\$140,000	\$990	\$1,290
Two bedroom - corner	\$142,000	\$990	\$1,290
Two bedroom / 1.5 bath	\$152,000	\$990	\$1,290

MODIFIED ENTRANCE FEE PLAN		
ENTRANCE FEE	MONTHLY FEE	
	Single	Double
\$43,000	\$1,626	N/A
\$57,500	\$1,886	\$2,186
70,000	\$2,118	\$2,418
\$71,000	\$2,134	\$2,434
\$76,000	\$2,214	\$2,514

FULL RENTAL PLAN	
MONTHLY FEE	
Single	Double
\$2,326	N/A
\$2,812	\$3,112
\$3,245	\$3,545
\$3,277	\$3,577
\$3,438	\$3,738

HARMONY AND HERITAGE	ENTRANCE FEE PLAN		
	ENTRANCE FEE	MONTHLY FEE	
		Single	Double
Two bedroom	\$148,000	\$990	\$1,290

MODIFIED ENTRANCE FEE PLAN		
ENTRANCE FEE	MONTHLY FEE	
	Single	Double
\$74,000	\$2,182	\$2,482

FULL RENTAL PLAN	
MONTHLY FEE	
Single	Double
\$3,374	\$3,674

Rates are subject to change to account for the cost-of-living adjustment.



For more information,
call 717-249-1363.

info@chapelpointe.org

www.ChapelPointe.org

770 S. Hanover Street, Carlisle, PA 17013