



Personal Care RATES AND FLOOR PLANS

2025



For more information, call 717-249-1363.

www.ChapelPointe.org | info@chapelpointe.org | 770 S Hanover St, Carlisle, PA 17013



POPULAR ACTIVITIES:

- Arts & crafts
- Celebrations, parties, picnics, & festivals
- Common areas for puzzling, playing piano, & socializing
- Concerts & sing-a-longs
- Devotions, Bible studies, & worship services
- Group games & movies
- Library
- Scenic Rides
- Visiting therapy pets

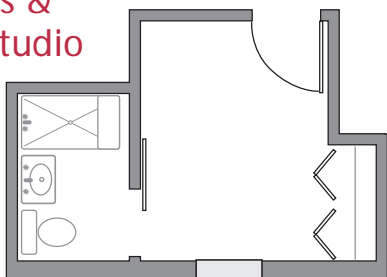
THE DIFFERENCE PERSONAL CARE CAN MAKE

Personal Care, sometimes called assisted living elsewhere, provides a supportive, caring environment where you maintain independence while receiving help with daily activities. With Personal Care, you have peace of mind, knowing that trained staff can help 24/7. This reassurance extends to family members who can visit regularly and know that your needs are met when they can't be by your side.

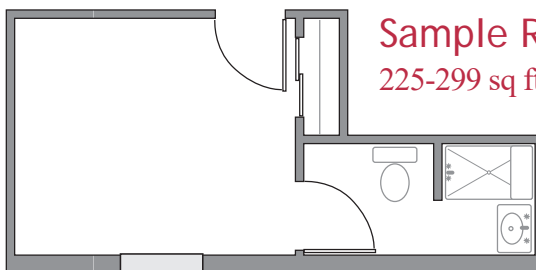
You enjoy your own space within a private studio or suite. With staff serving you meals and keeping house, you gain the time and energy to focus on your needs and interests. Being surrounded by peers and having recreational and spiritual opportunities at your fingertips work together to create a real sense of community and connection. Within Personal Care, you can live with purpose and joy.

PERSONAL CARE FLOOR PLANS

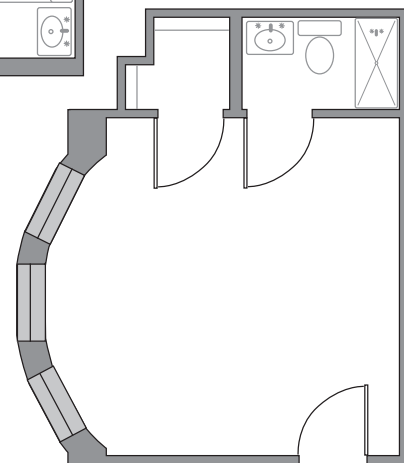
Sample Genesis & Garden View Studio
approx. 186 sq ft



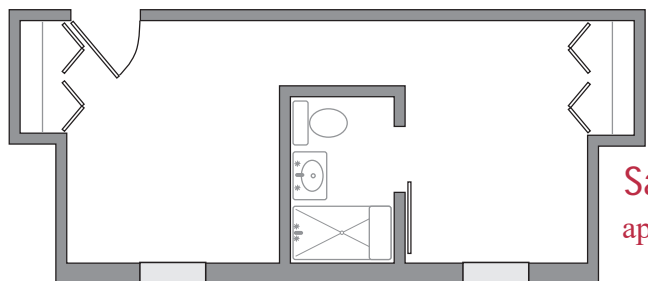
Sample Romans Studio
225-299 sq ft



Sample Romans Deluxe Studio
300+ sq ft



Sample Psalms Suite
approx. 328 sq ft



2025 PERSONAL CARE DAILY RATES

Genesis Studio (approx. 186 sq ft)	\$235
Romans Studio (225-299 sq ft)	\$275
Romans Deluxe Studio (300+ sq ft)	\$295
Psalms Suite (approx. 328 sq ft)	\$320
Kings Suite (733 sq ft)	\$340
Garden View Studio (Secured Memory Support)	\$325
Level II Care (in excess of 1 hour of care/day)	add \$95/day
Respite Care	add \$95/day
Second Person	add \$115/day

"[Mom] repeatedly affirms that nothing she ever asks for is too much trouble for the staff. ... She feels cared-for, that people know who she is and call her by name. She has the level of independence she needed, and she has a spiritual community again."

- Resident's Daughter

NEW OPTIONS COMING SEPTEMBER 2025

JOIN THE PRIORITY LIST TODAY!

Chapel Pointe is growing to meet the increased demand for Personal Care in Carlisle. In 2025, we're building four additional first-floor studios and one apartment-style suite.

These spacious, thoughtfully designed spaces are crafted with aging in place in mind, ensuring that every feature is tailored to meet your needs. Experience more privacy, spacious bathrooms made for mobility, and larger floor plans to easily accommodate couples and assistive devices. Step into a home where you can truly relax, knowing you're set up for comfort and independence now and in the future.

Kings Suite
733 sq ft



Romans & Romans Deluxe Studios
271-357 sq ft





INCLUDED IN THE PERSONAL CARE DAILY RATE

Assistance with Activities of Daily Living

- Bathing (1/week) - including spa bath
- Personal Hygiene
- Dressing
- Managing health care & appointments
- Managing finances
- Securing transportation
- Using prostheses (commonly dentures or hearing aids)

Select Health Care Services

- Trained staff available 24/7
- Medication administration
- Monitoring of physical & emotional health

- Health insurance filings
- Priority access to skilled care households, if needed

Services & Products that Enhance Daily Life

- 24/7 emergency response system
- Three meals per day
- Housekeeping of rooms & common spaces
- Laundering of supplied linens
- Clothing labeling
- Maintenance of rooms, buildings, & grounds
- Trash removal
- Utilities
- Daily schedule of enriching

social & recreational activities

In-Room Amenities

- All private accommodations
- Basic Internet
- Cable TV service
- Telephone service
- Individual temperature control
- Walk-in shower with seat & grab bars
- Bed & bath linens, including pillow
- Soap & toiletries
- Compact refrigerator, if desired
- Basic furnishings, if desired

AVAILABLE FOR AN ADDITIONAL FEE

- Personal laundry - \$45/mo.
- Level 1 incontinence support - \$45/mo.
- Level 2 incontinence support - \$90/mo.
- Home care - \$33/hour
- Personal transportation - \$5.50/mile
- Professional hair care - pay/service

We Help Navigate Insurance for These On-site Services

- Physical, occupational, & speech therapies
- Visits with the physician, psychiatrist, & podiatrist
- Select x-ray & laboratory services