



Chapel Pointe Apartments

FLOOR PLANS AND RATES

2026

MONTHLY FEE

This simple payment consolidates your bills and keeps your life maintenance-free.

- 24/7 emergency response system
- Air conditioning & heat
- Basic Internet
- Electricity
- Fire extinguisher
- Home maintenance
- Housekeeping of common areas
- Maintenance of supplied appliances
- Landscaping & lawn care
- On-site storage
- Property insurance
- Real estate taxes
- Road maintenance & snow removal
- Scheduled shopping shuttle
- Trash removal
- Water & sewer
- Access to on-site amenities, plus a calendar of activities
- Community App account for on-demand access to events, menus, people, & services

For an additional fee, add:

- Cable TV - \$35/mo.
- High-Speed Internet - \$25/mo.
- Housekeeping - \$35/hr.
- Meals - \$7.10-\$10.50

(Phone contracted independently.)



We want you to feel confident about your future. That's why Chapel Pointe offers flexible pricing options designed to provide financial, physical, and emotional security. Regardless of the plan you choose, you'll have priority access to our full continuum of care.

ENTRANCE FEE PLAN (MOST POPULAR)

Pay more up front so you can enjoy a lower monthly fee. The partially refundable entrance fee offers added financial security, with a refund amortized at approximately 20% per year if you permanently leave within the first five years.

MODIFIED ENTRANCE FEE PLAN

This plan is a hybrid of the Entrance Fee Plan and Full Rental Plan. Make a smaller upfront payment and pay a larger monthly fee than with the regular Entrance Fee Plan.

This entrance fee is also partially refundable at approximately 20% per year within the first five years of living at Chapel Pointe.

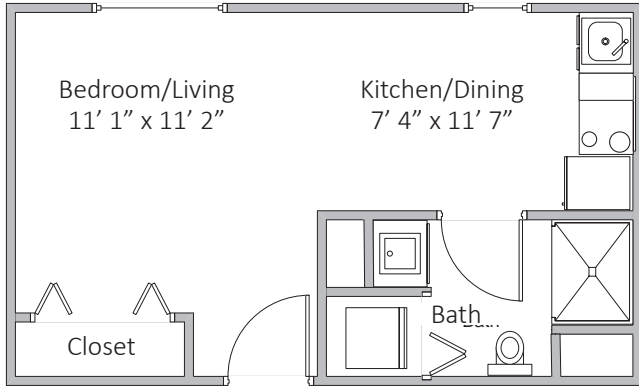
OPTION 3: FULL RENTAL PLAN

No entrance fee is required, so this plan features the highest monthly fee.

CHAPEL POINTE APARTMENT FLOOR PLANS

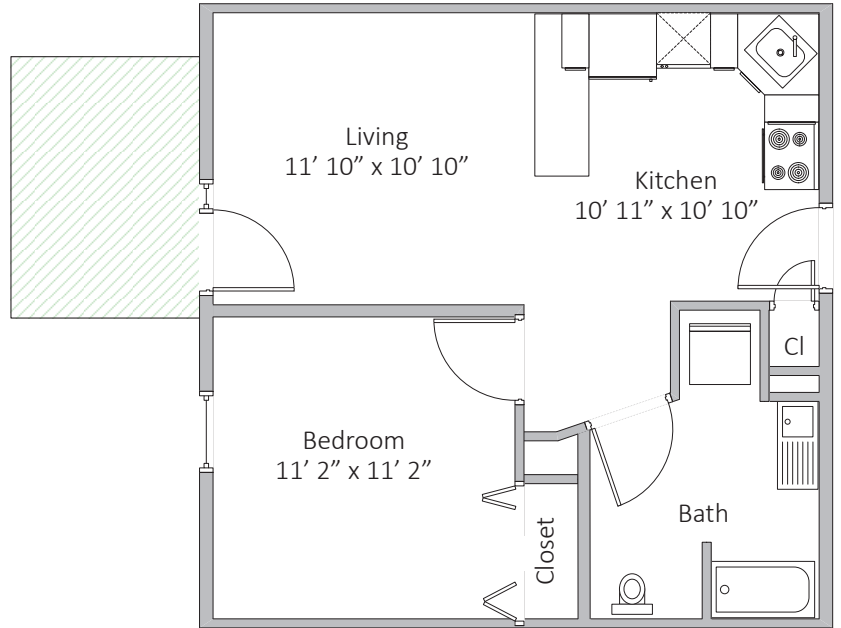
BEDFORD TERRACE AND CORNERSTONE MANOR

Efficiency | 312 sq. ft.



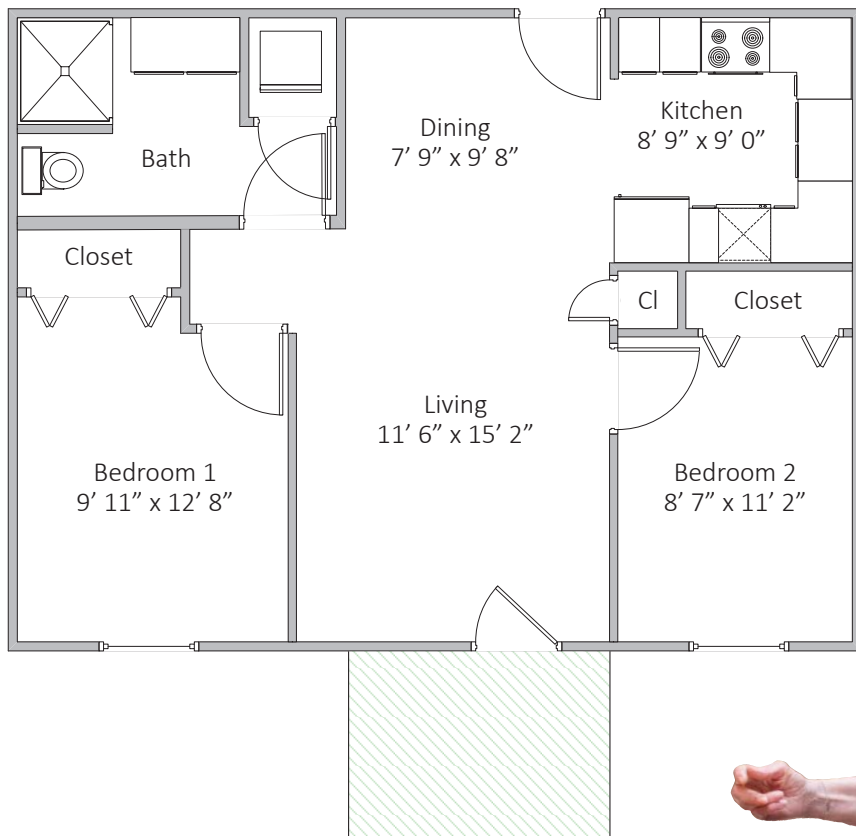
BEDFORD TERRACE AND CORNERSTONE MANOR

One Bedroom | 527 sq. ft.



BEDFORD TERRACE AND CORNERSTONE MANOR

Two Bedrooms | 702 sq. ft.

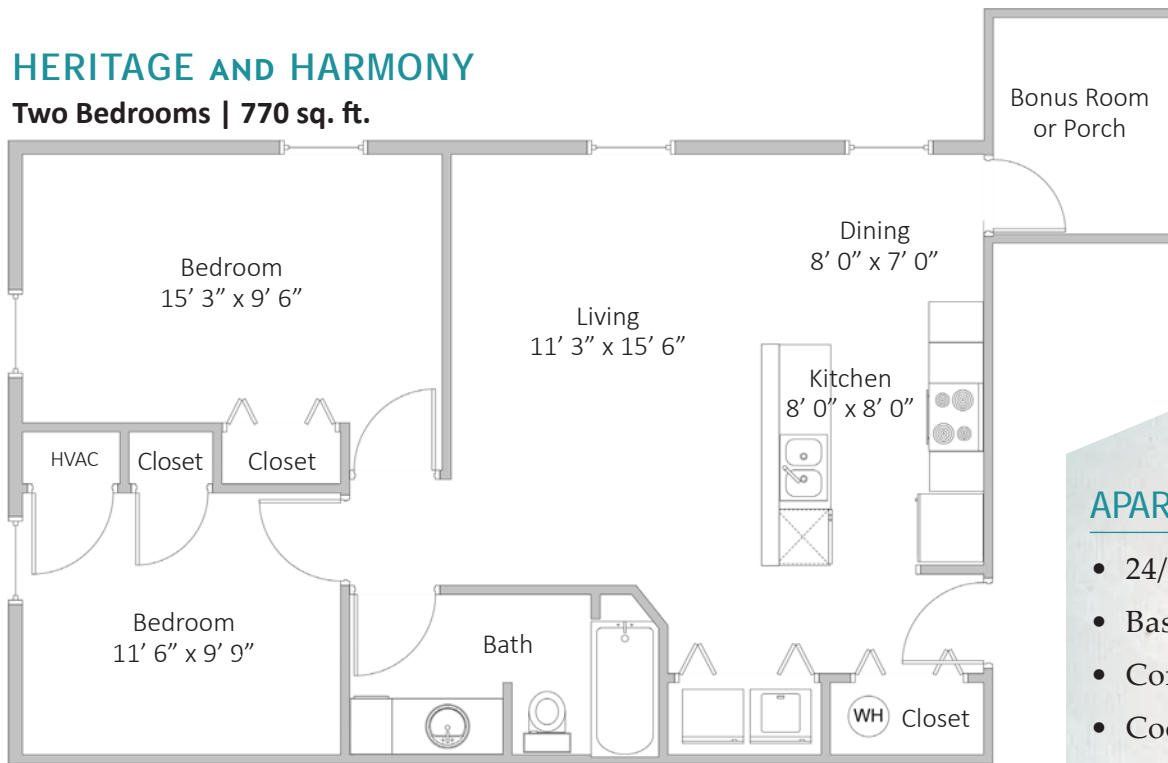


"We enjoy independent living and the freedom to go and come as we please. We enjoy the peace of mind that continuing care provides. If we had to do it all over again, ... we would have made our decision to come here several years earlier."
- The Schleh, residents



HERITAGE AND HARMONY

Two Bedrooms | 770 sq. ft.

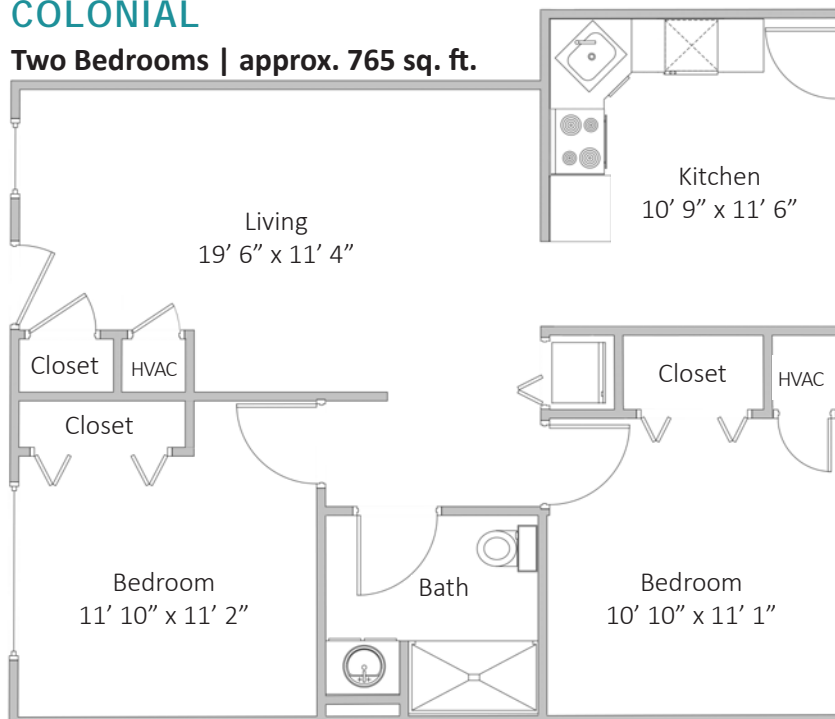


APARTMENT FEATURES

- 24/7 Medical alert system
- Basic Internet
- Comfort-height toilets
- Cooking range
- Dishwasher
- Fire detection system
- Key-fob main entrance (for applicable buildings)
- Microwave
- Outdoor video surveillance of property
- Parking space
- Refrigerator/freezer
- Single-story living
- Storage- & safety-conscious cabinetry design
- Washer & dryer
- Walk-in shower with seat & grab bars

COLONIAL

Two Bedrooms | approx. 765 sq. ft.



CHAPEL POINTE APARTMENT RATES

COLONIAL	FULL ENTRANCE FEE PLAN		
	ENTRANCE FEE	MONTHLY FEE	
		Single	Double
One bedroom	\$117,000	\$985	\$1,295
Two bedroom	\$150,000	\$1,015	\$1,325
Two bedroom / two bath	\$153,000	\$1,015	\$1,325

MODIFIED ENTRANCE FEE PLAN		
ENTRANCE FEE	MONTHLY FEE	
	Single	Double
\$58,500	\$1,927	\$2,237
\$75,000	\$2,223	\$2,533
\$76,500	\$2,247	\$2,557

FULL RENTAL PLAN	
MONTHLY FEE	
Single	Double
\$2,869	\$3,179
\$3,431	\$3,741
\$3,479	\$3,789

HARMONY AND HERITAGE	ENTRANCE FEE PLAN		
	ENTRANCE FEE	MONTHLY FEE	
		Single	Double
Two bedroom	\$165,000	\$1,015	\$1,325

MODIFIED ENTRANCE FEE PLAN		
ENTRANCE FEE	MONTHLY FEE	
	Single	Double
\$82,500	\$2,344	\$2,654

FULL RENTAL PLAN	
MONTHLY FEE	
Single	Double
\$3,672	\$3,982

BEDFORD TERRACE	FULL ENTRANCE FEE PLAN		
	ENTRANCE FEE	MONTHLY FEE	
		Single	Double
Efficiency	\$88,000	\$950	N/A
One bedroom	\$125,000	\$985	\$1,295
Two bedroom	\$152,000	\$1,015	\$1,325
Two bedroom - corner	\$154,000	\$1,015	\$1,325

MODIFIED ENTRANCE FEE PLAN		
ENTRANCE FEE	MONTHLY FEE	
	Single	Double
\$44,000	\$1,659	N/A
\$62,500	\$1,992	\$2,302
\$76,000	\$2,239	\$2,549
\$77,000	\$2,255	\$2,565

FULL RENTAL PLAN	
MONTHLY FEE	
Single	Double
\$2,367	N/A
\$2,998	\$3,308
\$3,463	\$3,773
\$3,495	\$3,805

CORNERSTONE MANOR	FULL ENTRANCE FEE PLAN		
	ENTRANCE FEE	MONTHLY FEE	
		Single	Double
Efficiency	\$87,000	\$950	N/A
One bedroom	\$119,000	\$985	\$1,295
Two bedroom	\$150,000	\$1,015	\$1,325
Two bedroom / 1.5 bath	\$165,000	\$1,015	\$1,325

MODIFIED ENTRANCE FEE PLAN		
ENTRANCE FEE	MONTHLY FEE	
	Single	Double
\$43,500	\$1,651	N/A
\$59,500	\$1,943	\$2,253
\$75,000	\$2,223	\$2,533
\$82,500	\$2,344	\$2,654

FULL RENTAL PLAN	
MONTHLY FEE	
Single	Double
\$2,351	N/A
\$2,901	\$3,211
\$3,431	\$3,741
\$3,672	\$3,982

Rates are subject to change to account for the cost-of-living adjustment.



For more information,
call 717-249-1363.

info@chapelpointe.org

www.ChapelPointe.org

770 S. Hanover Street, Carlisle, PA 17013