



Courtyard Apartments

FLOOR PLANS AND RATES

2026



For more information, call 717-249-1363.

www.ChapelPointe.org | info@chapelpointe.org | Cambridge Court, Carlisle, PA 17013

APARTMENT FEATURES

- 24/7 Medical alert system
- 2 Bedrooms & 2 Bathrooms
- Building elevator
- Comfort-height toilets
- Cooking range
- Dishwasher
- Fire detection system
- High-end finishes
- Microwave
- One-car garage & driveway parking
- Open-concept floor plan
- Pet-free
- Refrigerator/freezer with water & ice dispenser
- Solid surface countertops
- Storage- & safety-conscious cabinetry design
- Sunroom
- Washer & dryer
- Walk-in master closet
- Walk-in shower with seat & grab bars



LIVING NEXT TO POINTE PLACE AT CAMBRIDGE COURT

A close-knit and active senior apartment community, Cambridge Court is home to people who value connection, purpose, and peace of mind.

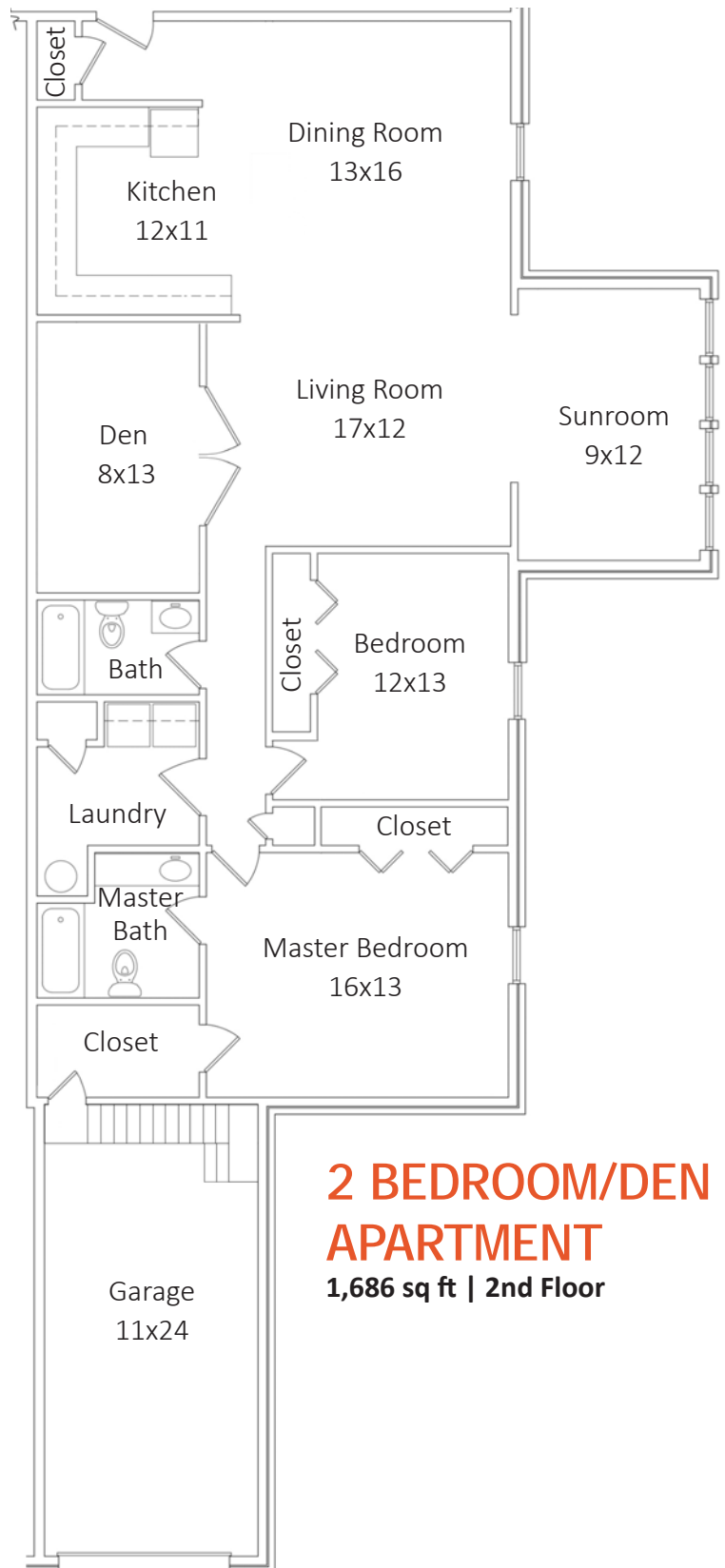
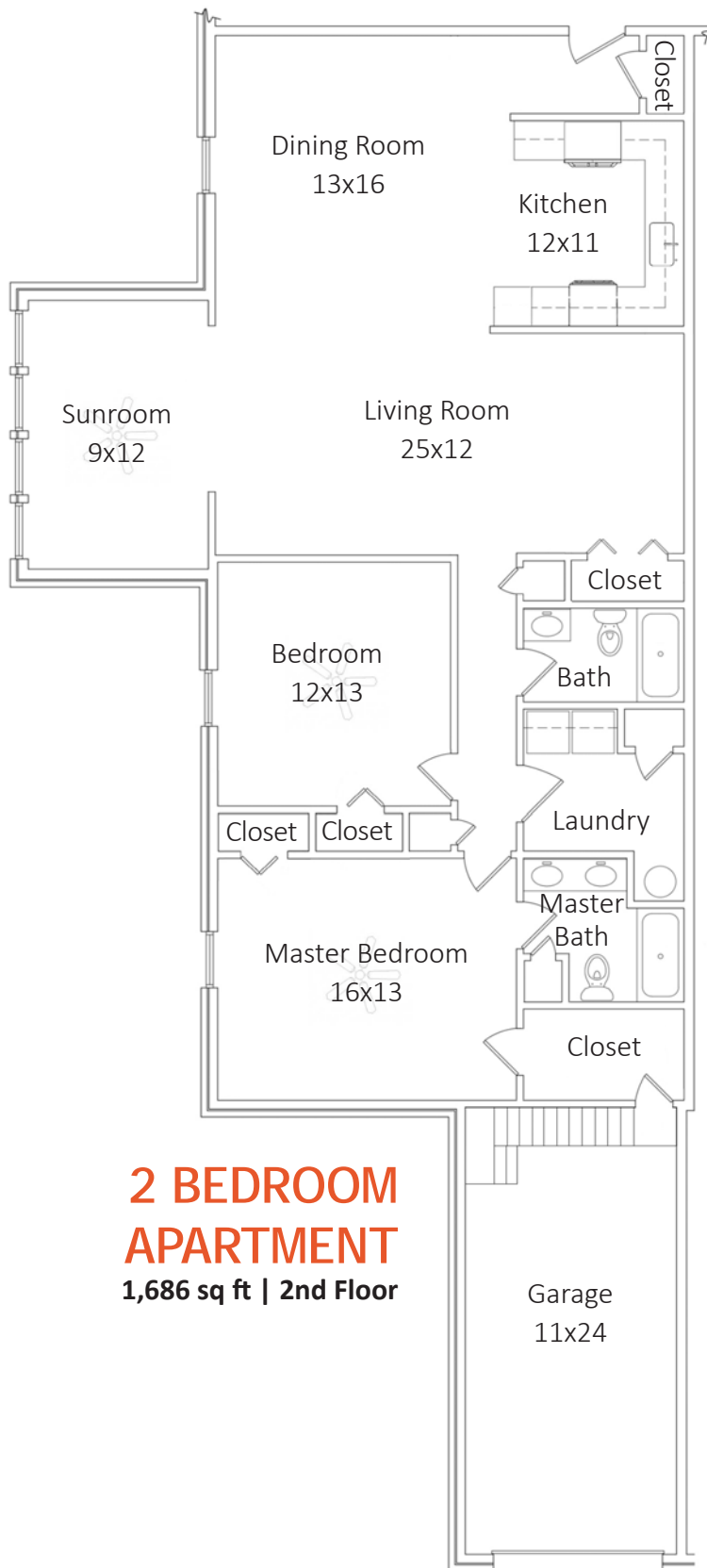
Set on more than four beautifully landscaped acres shared with our Pointe Place townhome community, Cambridge Court offers a friendly neighborhood feel. Being located near Dickinson Park and Carlisle's vibrant downtown makes it easy to enjoy wooded paths, gardens, restaurants, a nearby gym, and cultural attractions—all within walking distance. A convenient daily shuttle connects residents to Chapel Pointe's full calendar of activities.

Spacious, fully renovated apartments with premium finishes offer comfort and aging in place, paired with the ease of maintenance-free and landscaping-free living.

Best of all, Cambridge Court is backed by the promise of priority access to Chapel Pointe's full continuum of care, located just two miles away, providing confidence today and security for whatever the future holds.



SAMPLE FLOOR PLANS



MONTHLY FEE

This simple payment keeps your life maintenance-free and includes your utilities:

Resident Favorites

- 24/7 medical alert system notifies professionals for quick medical attention
- 24/7 fire response system
- Landscaping & lawn care
- Home maintenance
- Use of the Pointe Place Community Center & Cambridge Court Picnic Patio
- A calendar of social & recreational activities
- Community App account for on-demand access to events, menus, people, & services

Monthly Fee Also Includes

- Air conditioning & heat
- Electricity
- Home Owners Association Fees
- Maintenance of supplied appliances
- Property insurance
- Real estate taxes
- Road maintenance & snow removal
- Scheduled shuttle transit
- Trash removal
- Water & sewer

Available For An Added Fee

- Meals - \$7.10-\$10.50
- Housekeeping - \$35/hr.

(TV, phone, and Internet contracted independently.)



ENTRANCE FEE PLAN

We want you to feel confident about your future, so we designed our fee structure to provide financial peace of mind, access to dependable care, and emotional security.

The Courtyard Apartments typically operate under a partially refundable entrance fee plan. The entrance fee is a long-term investment in your well-being, securing your place within Chapel Pointe’s full continuum of care. Your financial security includes three key elements:

- If you move out of your apartment within five years, a portion of your entrance fee is returned to you or your estate, amortized at approximately 20% per year.
- Your major living expenses are bundled into a single monthly fee, helping you enjoy a stable, predictable cost of living—regardless of changes in the broader economy.
- Through Chapel Pointe’s benevolence ministry, residents who outlive their financial resources through no fault of their own can confidently continue to call Chapel Pointe home.

COURTYARD APARTMENT RATES	ENTRANCE FEE PLAN		
	ENTRANCE FEE	MONTHLY FEE	
		Single	Double
First floor apartment	\$250,000	\$1,360	\$1,670
Second floor apartment	\$215,000	\$1,360	\$1,670

Rates are subject to change to account for the cost-of-living adjustment.