



Chapel Pointe Apartments

FLOOR PLANS AND RATES

2022

MONTHLY FEE

This simple payment consolidates your bills and keeps your life maintenance-free.

- 24/7 emergency response system
- Air conditioning & heat
- Annual window washing
- Electricity
- Fire extinguisher
- Home maintenance, inside & out
- Housekeeping of common areas
- Insurance consultant
- Maintenance of supplied appliances
- Landscaping & lawn care
- On-site storage
- Property insurance
- Real estate taxes
- Regularly scheduled blood pressure screenings
- Road maintenance & snow removal
- Scheduled shuttle transit
- Trash removal
- Water & sewer
- Wi-Fi in common areas
- A host of amenities, plus a calendar of activities
- Community App account for on-demand access to events, menus, people, & services

For an additional fee, add:

- Cable TV - \$27/mo.
- Meals - \$6.25-\$9.25
- Home care - \$27/hour
- Internet - \$21/mo.



We want you to feel confident about your future, so we've structured our rates so you gain financial, physical, and emotional security. You have freedom to select the plan that best meets your needs, knowing that no matter what option you choose, you will have priority access to Chapel Pointe's full continuum of services.

OPTION 1 (MOST POPULAR): ENTRANCE FEE PLAN

This partially refundable entrance fee allows you to pay more up front so you can enjoy a low monthly fee.

It also offers additional financial security because, if you permanently leave your apartment within the first five years, you will receive a partial refund, which is amortized at approximately 20 percent per year.

OPTION 2: MODIFIED ENTRANCE FEE PLAN

The Modified Entrance Fee Plan is a hybrid of the Entrance Fee Plan (option 1) and Full Rental Plan (option 3). You pay a smaller lump sum up front and make up the cost difference by paying a larger monthly fee than the regular Entrance Fee Plan offers.

The Modified Entrance Fee is also partially refundable at approximately 20 percent per year within the first five years of living at Chapel Pointe.

OPTION 3: FULL RENTAL PLAN

Through the Full Rental Plan, you pay the largest monthly fee, but in exchange, you do not pay a lump sum upon moving to Chapel Pointe.

FLOOR PLANS

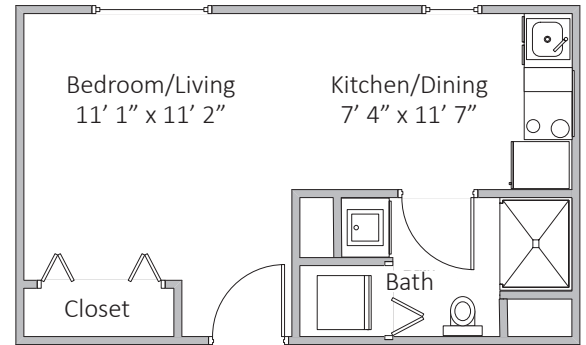
APARTMENT FEATURES

- 24/7 Medical alert system
- Comfort-height toilets
- Cooking range
- Dishwasher
- Fire detection system & sprinklers
- Garbage disposal
- Individually controlled thermostats
- Key-fob main entrance (for applicable buildings)
- Microwave
- Parking space
- Refrigerator/freezer
- Single-story living
- Storage- & safety-conscious cabinetry design
- Video surveillance of property
- Washer & dryer
- Walk-in shower with seat & grab bars



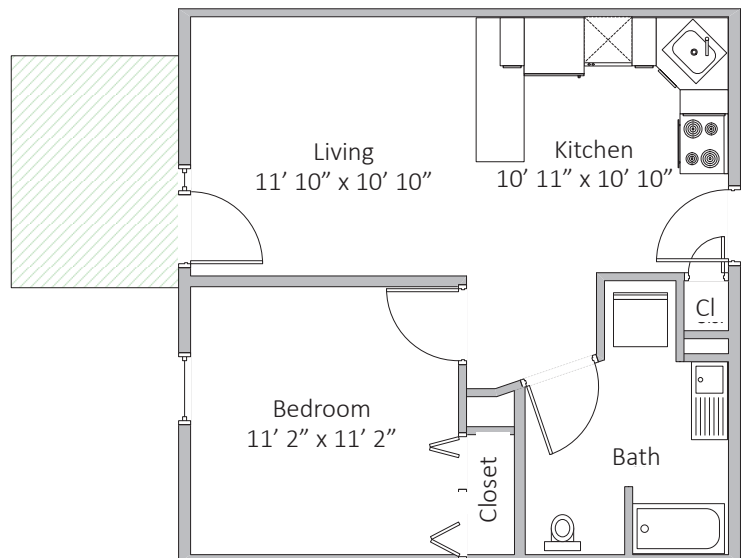
BEDFORD TERRACE AND CORNERSTONE MANOR

Efficiency | 312 sq. ft.



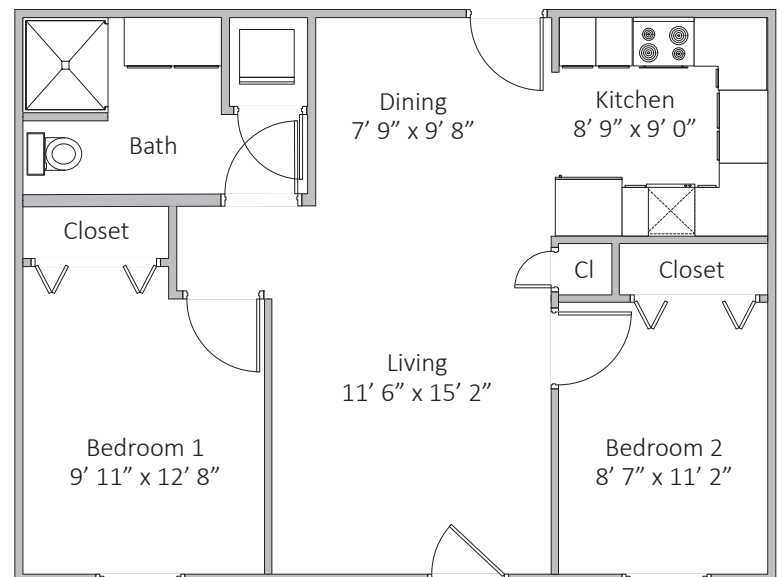
BEDFORD TERRACE AND CORNERSTONE MANOR

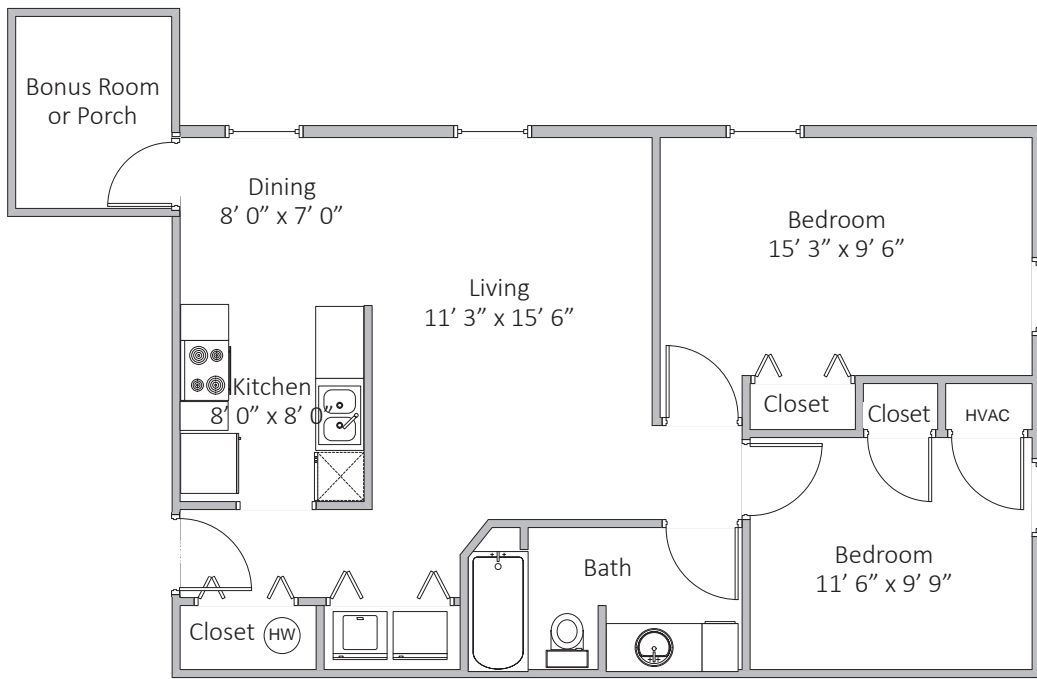
One Bedroom | 527 sq. ft.



BEDFORD TERRACE AND CORNERSTONE MANOR

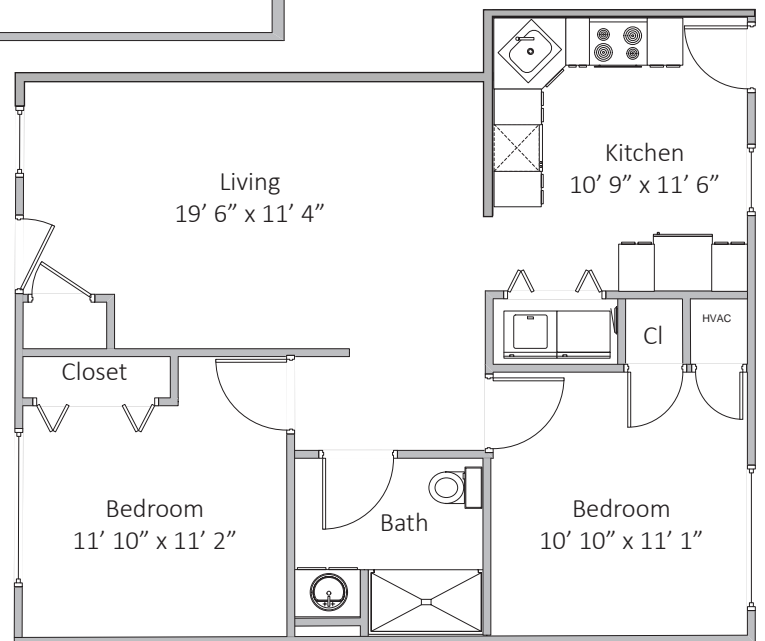
Two Bedrooms | 702 sq. ft.





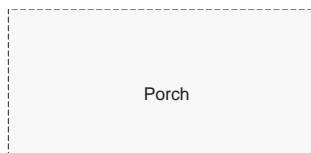
HERITAGE AND HARMONY

Two Bedrooms | 770 sq. ft.



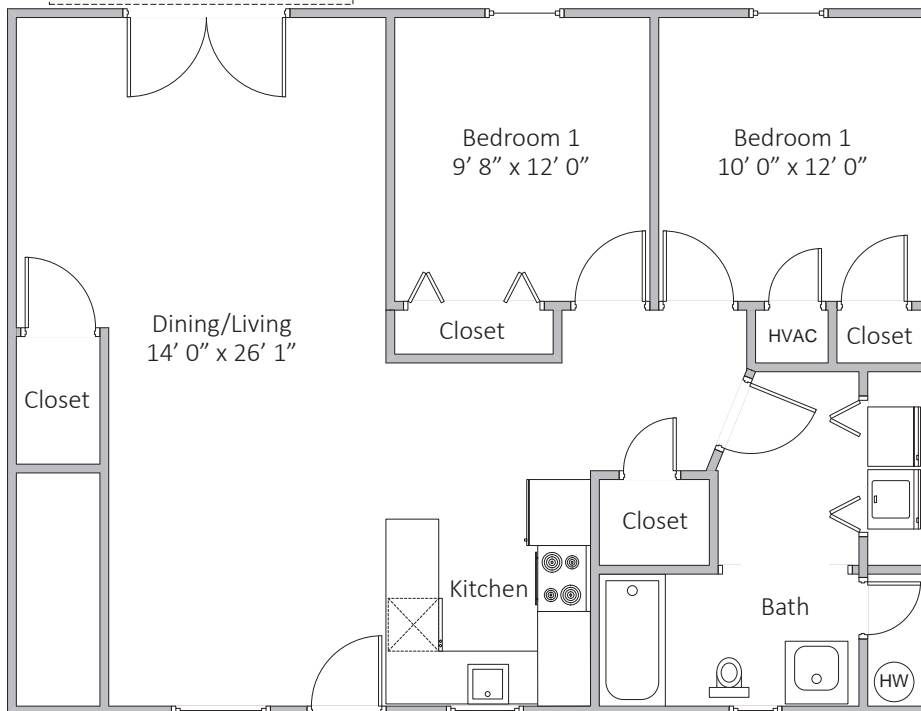
COLONIAL

Two Bedrooms | 765 sq. ft.



JARRETT

Two Bedrooms | 861 sq. ft.



WE'VE SIMPLIFIED MOVING!

When you reserve a Chapel Pointe Apartment, you'll receive **20 hours of free downsizing assistance**. Plus, we've doubled our move-in time, so you'll have **6 full months to move!**

CHAPEL POINTE APARTMENT RATES

COLONIAL	FULL ENTRANCE FEE PLAN		
	ENTRANCE FEE	MONTHLY FEE	
		Single	Double
One bedroom	\$102,000	\$865	\$1,090
Two bedroom	\$128,000	\$895	\$1,120
Two bedroom / two bath	\$132,000	\$895	\$1,120

BEDFORD TERRACE	FULL ENTRANCE FEE PLAN		
	ENTRANCE FEE	MONTHLY FEE	
		Single	Double
Efficiency	\$80,000	\$830	N/A
One bedroom	\$108,000	\$865	\$1,090
Two bedroom	\$131,000	\$895	\$1,120
Two bedroom - corner	\$133,000	\$895	\$1,120

CORNERSTONE MANOR	FULL ENTRANCE FEE PLAN		
	ENTRANCE FEE	MONTHLY FEE	
		Single	Double
Efficiency	\$74,000	\$830	N/A
One bedroom	\$102,000	\$865	\$1,090
Two bedroom	\$124,000	\$895	\$1,120
Two bedroom - corner	\$125,000	\$895	\$1,120

JARRETT	ENTRANCE FEE PLAN		
	ENTRANCE FEE	MONTHLY FEE	
		Single	Double
One bedroom	\$102,000	\$865	\$1,090
Two bedroom	\$124,000	\$895	\$1,120
Two bedroom / 1.5 bath	\$126,000	\$895	\$1,120

HARMONY AND HERITAGE	ENTRANCE FEE PLAN		
	ENTRANCE FEE	MONTHLY FEE	
		Single	Double
Two bedroom	\$128,000	\$895	\$1,120

MODIFIED ENTRANCE FEE PLAN		
ENTRANCE FEE	MONTHLY FEE	
	Single	Double
\$37,000	\$1,426	N/A
\$51,000	\$1,687	\$1,912
\$62,000	\$1,894	\$2,119
\$62,500	\$1,902	\$2,127

MODIFIED ENTRANCE FEE PLAN		
ENTRANCE FEE	MONTHLY FEE	
	Single	Double
\$51,000	\$1,687	\$1,912
\$62,000	\$1,894	\$2,119
\$63,000	\$1,910	\$2,135

MODIFIED ENTRANCE FEE PLAN		
ENTRANCE FEE	MONTHLY FEE	
	Single	Double
\$64,000	\$1,926	\$2,151

FULL RENTAL PLAN	
MONTHLY FEE	
Single	Double
\$2,022	N/A
\$2,508	\$2,733
\$2,892	\$3,117
\$2,908	\$3,133

FULL RENTAL PLAN	
MONTHLY FEE	
Single	Double
\$2,508	\$2,733
\$2,892	\$3,117
\$2,924	\$3,149

FULL RENTAL PLAN	
MONTHLY FEE	
Single	Double
\$2,956	\$3,181

"We enjoy independent living and the freedom to go and come as we please. We enjoy the peace of mind that continuing care provides. If we had to do it all over again, ... we would have made our decision to come here several years earlier."
- The Schlehs, residents



Rates are subject to change to account for the cost-of-living adjustment. Colonial and Bedford Terrace apartments are only available through the Entrance Fee Plan.

To schedule your personal tour, call 717-249-1363.

ChapelPointe.org | info@chapelpointe.org | 770 S. Hanover Street, Carlisle, PA 17013