

# SEASONS

“...God did good and gave you rains from heaven and fruitful seasons.” Acts 14:17

SPRING 2025

## LOOKING FORWARD IN FAITH, STANDING STRONG IN MISSION



Administrative and marketing offices are relocating next door to 101 Noble Boulevard.

Change is never easy, especially when it means leaving a space that has been familiar for decades. Like many of our administrative staff, I am in the process of moving my office - a space that has been my own and has felt comfortable for many years. However, the move is for the greater good in that it will pave the way for the construction of new Personal Care rooms, a key phase of our thoughtfully designed master plan. (Throughout this newsletter, you can learn more about our vision for the campus and the important steps ahead.)

Chapel Pointe has always been a place of growth and transformation. Since 1944, leaders have made decisions to expand, renovate, and rebuild—not for the sake of change itself, but to offer the best quality of life, expand our ministry to

reach more people, and ultimately maintain a thriving community for generations to come.

Each step forward is possible because of the vision and faithfulness of those who came before us. We stand on their shoulders as we advance together with the common thread of service in the name of Christ Jesus. Our mission remains the same.

**For those who faithfully support the ministry of benevolence, THANK YOU!** The need is great, and God has blessed Chapel Pointe through your generosity to those who are under-resourced.

We believe that our master plan will set us up to provide benevolence to those in need for many years. We invite you to share in this vision. We hope you'll see not just

the buildings and renovations, but the lives that will be touched through these improvements. Your partnership makes an impact!

We invite you to join us in prayer for wisdom and guidance in this process, just as Chapel Pointe's leaders have done since before our community was established.

Every decision has been covered in prayer, seeking God's direction—and we trust that He will continue to lead us. With every building and space in our community, leaders had a vision that they were convinced in their hearts and minds was the right move. God has not led us astray. We thank the Lord for His guidance.

We also ask for your prayers as we seek necessary approvals from the Borough of Carlisle. These approvals take time, and we pray that officials will see how this project benefits not only Chapel Pointe but the broader community as well.

Thank you for being part of this journey. Together, we honor the past while stepping forward in faith toward an even brighter future.



by Jonathan L. Doty, Director of Development & Outreach

# GROWING WITH PURPOSE: OUR FUTURE PLANS

At Chapel Pointe, we believe that growth and change should never come at the expense of what makes a community truly feel like home. While we look forward to an exciting future, we remain deeply committed to the values, people, and traditions that have shaped us. Our master plan reflects this balance—enhancing and expanding our community while preserving the welcoming, purpose-filled environment that makes Chapel Pointe special.

## A GROWING NEED

Growth of the senior living field in the U.S. is not only ripe with possibility but absolutely necessary to meet the needs of our nation. According to the U.S. Census Bureau, the number of Americans age 65+ will soar from 58 million in 2022 to 82 million by 2050. Alongside this growth, the number of people living with dementia is expected to more than double, creating an unprecedented demand for care and support.

At the same time, the shrinking caregiver workforce makes this challenge even harder. According to LeadingAge, a national senior living association, the number of working-age adults available to support each senior (85+) is dropping fast. In 2016, there were 31 potential caregivers for every senior in this age group, but by 2060, that number is expected to shrink to just 12. This means far fewer caregivers will be available to provide the essential support our aging population needs.

We recognize the responsibility before us. By listening to the voices of the Chapel Pointe family and conducting a market study, we've developed a master plan that prioritizes excellence at every level of care. Our goal is simple: to ensure that Chapel Pointe remains a place where people don't just live but truly thrive for generations to come.

## HAPPENING NOW: FACELIFTS FOR HOUSEHOLDS

We've worked hard to maintain clean and beautiful skilled care households over the past 10+ years since we built them. But like all homes, eventually



they need renovations to stay fresh. We're working through each household to replace the original bedroom furniture and common area carpets. A fresh coat of paint completes the new blue and cream color scheme that creates a comfortable and calming environment.

## COMING THIS YEAR: MORE PERSONAL CARE

In April, we'll begin converting several offices into four personal care studios and one extra-large suite (floor plans pictured on next page). Designed with comfort and accessibility in mind, each accommodation will feature a private, easy-to-navigate bathroom, a generous living area, and convenient access to our dining room.

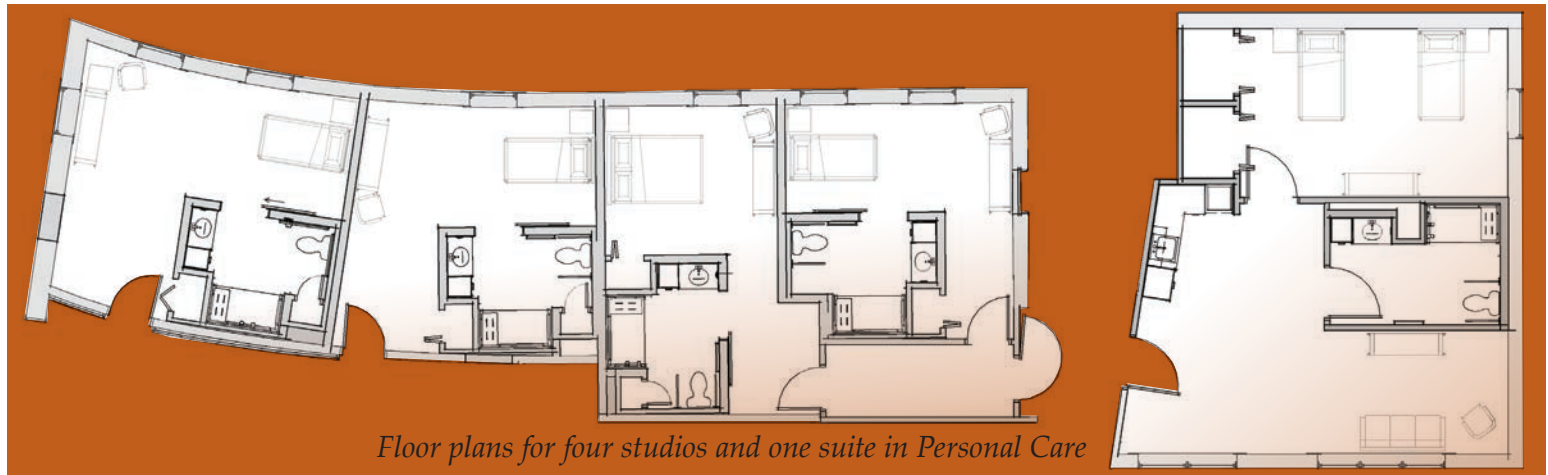
When completed in fall 2025, these new spaces will help us serve the evolving needs of residents. The additional revenue generated will prepare us to continue expanding our services in the future.

As Jonathan mentioned in his article on page one, this project means many office staff are relocating to our adjacent building at 101 Noble Boulevard. But don't worry—you can still reach us at the same phone numbers and email addresses.

## FUTURE PLANS: BIGGER INDEPENDENT LIVING

As the number of people reaching age 65+ grows, so does our independent living priority list. Following





*Floor plans for four studios and one suite in Personal Care*

our market analysis, we engaged experienced construction, architect, and land development firms to help us create a vision for future development (pictured below) that includes:

- up to 44 spacious, high-end apartments, including some with garages
- a hub building with a community room, fitness center, salon, centralized offices, and more
- additional parking, green space, and walking paths
- a new main entrance and traffic pattern to improve safety

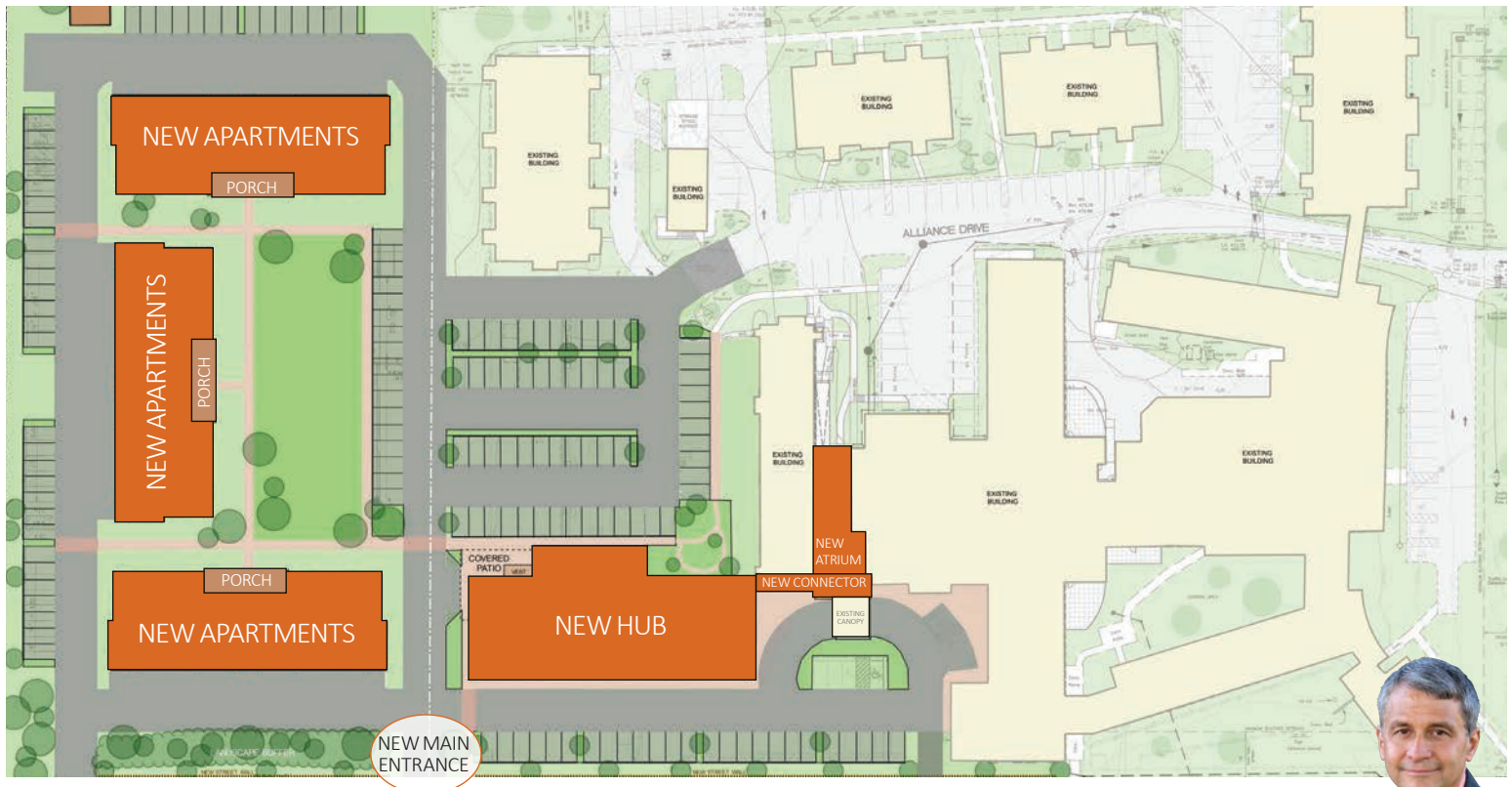
We are currently exploring zoning options and

seeking thorough approvals before finalizing our plans. It will be several years until we're ready to begin construction.

Until then, we will continue to keep our Chapel Pointe family informed about our progress and ways you can support our mission.

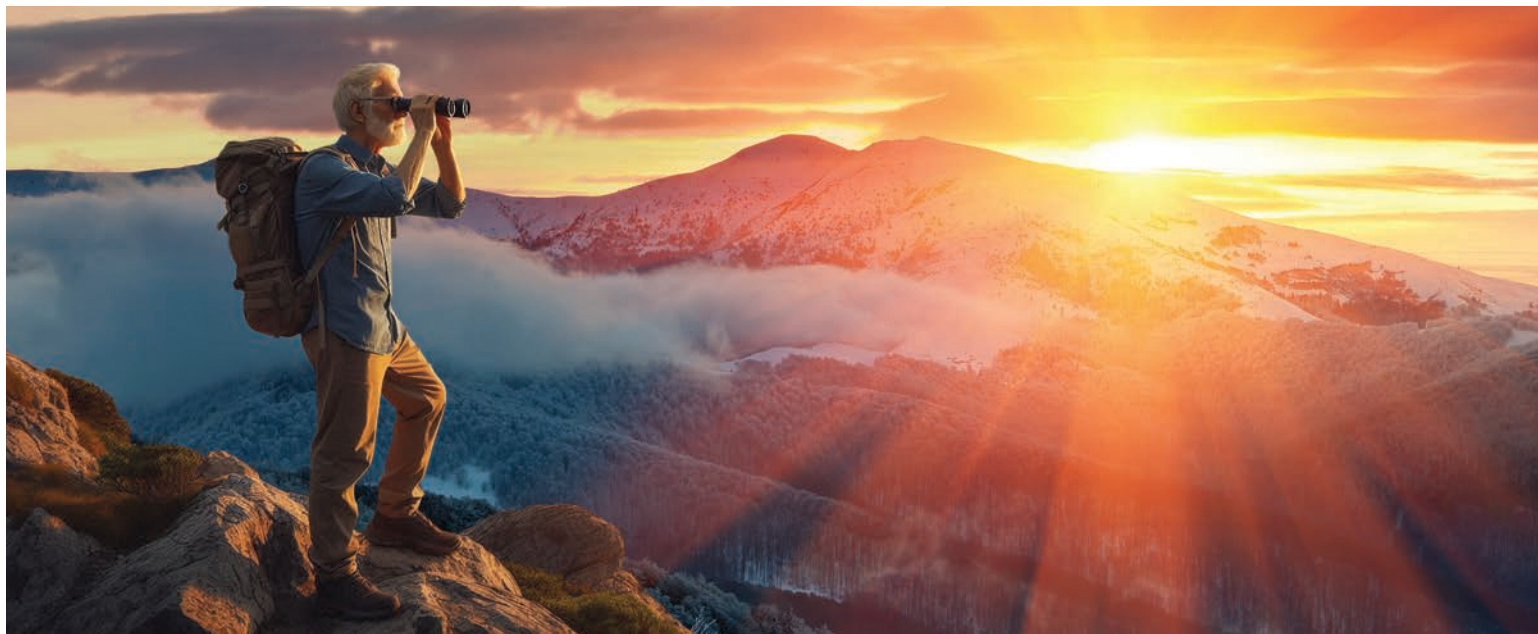
### COMMITTED TO SERVE

Our master plan enhancements are all part of our commitment to serve both current and future residents with excellence. By investing in every level of care, we're ensuring that Chapel Pointe remains a place where you can thrive, no matter your journey.



by Kent Peachey, CEO





## LOOKING FORWARD WITH EXPECTATION

The older we get, the more we like to look back and reminisce. There are so many blessings of yesteryear that we do not want to forget. However, I am also reminded of two individuals who were very old, but were people who were certainly looking forward.

Scripture records their story in Luke 2:22-38. Simeon was looking forward with great anticipation. The Spirit had revealed to him that he was not going to die until he saw the Messiah. He had every reason to be looking forward - what a promise! Simeon was righteous, devout, and a spirit-filled man. You can sense the excitement and fulfillment in the air when Joseph and Mary brought baby Jesus into the temple. This was not going to be a routine dedication. Simeon possessed a wonderful adoration of Jesus Christ. He was bubbling over

**“Moved by the Spirit, he [Simeon] went into the temple courts. When the parents brought in the child Jesus to do for him what the custom of the Law required, Simeon took him in his arms and praised God.”**

Luke 2:27-28

with a magnificent acclamation and prophecy. “Mine eyes have seen Your salvation...”

Anna was a long-time widow who was looking up with thanks to God. She was a worshiper, who was constantly fasting and praying. She was equally excited to talk about Jesus to everyone who had been looking forward to the promised King. Simeon and Anna are great scriptural role models for each of us. We

must keep looking forward to the Lord Jesus Christ.

As a retirement community with a wonderful history and legacy, we don't want to forget how the Lord has brought us this far by faith. However, we are also looking forward to how we can further expand our ministry possibilities. Thank you for standing with us in prayer as we desire for the Holy Spirit to give us clear discernment for the future.

I have long been convinced that we ultimately find what we are looking for. If we are looking for trouble...we find it. If we are looking for dirt...we find it. If we are looking for DIRECTION...we find it. If we are looking for CHRIST...we find HIM.

by Rev. Steve Motter







## MOVING MOUNTAINS WITH GOD

In response to Isaiah 46:9, “Remember the things I have done in the past (NLT),” my community group took time to review and praise God for what he has done for us. We saw His hand through times of transition, healing, and deep spiritual renewal. Whether through physical challenges, new opportunities, or overcoming hardships, God has been present, guiding and sustaining us.

We trust that, as God was faithful through past hardships, He will remain faithful in the future.

In Matthew 17:20, Jesus said, “I tell you the truth, if you had faith even as small as a mustard seed, you could say to this mountain, ‘move from here to there, and it would move. Nothing would be impossible.’”

What mountains do you need God to move?

For some of the residents at Chapel Pointe, they need God to move

**“In this world, you will have trouble, but take heart! I have overcome the world.”**

**John 16:33**

mountains of physical challenges, loneliness from losing loved ones, surprising life transitions, or the fear of not being able to pay for care.

In his great grace and love, God gives each of us an opportunity to join his ongoing work. The Chapel Pointe employees do this daily as they serve residents, and you can have a role in moving mountains at Chapel Pointe, too! As you invest in the people of Chapel Pointe in big and small ways, God wants to go beyond your greatest dreams and expectations to bring glory to Him and reveal His name.

One way to do this is through planned giving—ensuring that the resources God has entrusted

to us continue advancing His kingdom even after we are with Him in Heaven.

I am here to help you create a plan that aligns your assets with God’s purposes. Through Chapel Pointe and Orchard Alliance, we can prayerfully design estate plans that leave a lasting legacy for Christ. If you would like to review your plan, please contact me at (717) 917-5309 or [hooberc@orchardalliance.org](mailto:hooberc@orchardalliance.org).

Let’s walk together in faith, gratitude, and a commitment to God’s eternal work. I hope and pray that you experience the wonder of God’s love and passion for you in all aspects of your life.

*Pictured above: God has been at work as we’ve seen (left) volunteer pets spreading joy; (center) campus-wide events - like the Chili Cook Off - bringing people together; and (right) staff using their talents to shine the light of Christ.*



# GENEROUS FRIENDS OF CHAPEL POINTE

Memorial and Honorarium Contributions from September 1, 2024 - February 28, 2025

## IN MEMORY OF...

**Armand S. Apa, Sr.**

By Ruth Apa

**Ella Armstrong**

By Deb Roggenbaum

**Lucy and Paul  
Banks, Sr.**

By Alice Bradley  
Pauline Banks

**Lela Taylor Barton**

By Ruth B. Collins  
Ann and Don Franklin

**Lois Schlaegel Bouw**

By Dan and Pat Bouw

**Revenda Burdette**

By Dick and Esther  
Ocker  
Pastor Steve and  
Pam Motter

**Doris Burrows**

By John and Sue  
Hendrickson

**Ruth Calaman**

By Pastor Steve and  
Pam Motter

**Ruth and Frank  
Calaman**

By Erma Thomas

**Erma Carr**

By Pastor Steve and  
Pam Motter

**Lawrence and Edna  
Clark**

By Doc & Cathy  
Weibley & Family

**Nancy Coon**

By Pastor Steve and  
Pam Motter

**Debbie Cowles**

By Ben and Gwen  
Harward  
Pastor Steve and  
Pam Motter  
Anita Hoch  
Kent and Debra  
Peachey  
Sue and Ronald Downs  
Corrine Gardner  
Ruth Jarrett  
David E. Cowles, Jr.

**Rev. and Mrs.**

**Robert Cowles**

By Ben and Gwen  
Harward

**Robert and Isabelle  
Curtis**

By Karen and James  
Keenan

**Joseph Dennison**

By Pastor Steve and  
Pam Motter

**Adela M. Detter**

By Carol Weigle

**Miss Emma Dittmar**

By Samuel Dittmar

**William and Ruth  
Dutton**

By Jean Strong

**Alleyne Fisher  
Errington**

By Sam Errington

**Daune M. Evans**

By Jim Evans, Kelly,  
and Katie

**Dot Evans**

By Anonymous

**Doris and Harold  
Fraker**

By Cheryl Sipe

**Doris Fraker**

By Harold S. Fraker, Jr.

**Thomas Frederick**

By Pastor Steve and  
Pam Motter

**Margaret Funk**

By Vonnie Heishman

**Muriel Groff**

By Pastor Steve and  
Pam Motter

**Don Group**

By Alice Smith  
Pastor Steve and  
Pam Motter  
Steve and Barbara Fry  
Wilmer Harris  
Cathy and Kevin  
Starnier  
Rev. Ed and Bev Wible  
Dolly Group

**Sierra Hockley**

By Kent and Debra  
Peachey

**Bob and Joan Hower**

By Glenn and Gayle  
Campbell

**Martha Johnson**

By Pastor Steve and  
Pam Motter

**Rev. William and  
Clarabelle Kissell**

By Bill and Jessica  
Kissell  
Samuel Dittmar

**Joyce Lebo**

By Dolly Group  
Craig Group

**Isabel Lehman**

By Berta Chronister  
and family  
Susan Bovie  
Pastor Steve and  
Pam Motter  
Dick and Ginny Suter  
Ronald and Brenda  
Doyle

**Alden P. Lewis**

By Dolly Group  
Jimmy and Pauline  
Satterfield  
Linda Perrine  
Susan Smith  
Pastor Steve and  
Pam Motter  
Timothy, Gregg, &  
Glenn Lewis  
Ruth Jarrett  
Fred Battles

**Eleanor B. Lewis**

By Timothy, Gregg,  
& Glenn Lewis

**Terry Lloyd**

By Pastor Steve and  
Pam Motter

**Neal and Elsie  
Mahaffey**

By Nancy J.  
Klingensmith

**David Macke**

By Pastor Steve and  
Pam Motter

**Dora Matthews**

By M. Ruth Williams

**William F. M.  
McGreehan, Sr.**

By Ruth M. Apa

**Pat McNerney**

By Her Children

**Darlene Meier**

By Pastor Steve and  
Pam Motter

**Bob and Marion  
Miller**

By The Miller Family

**John Miller**

By Pastor Steve and  
Pam Motter

**Norman Miller**

By Joan Miller

**Lana Sue Mitchell**

By Pastor Steve and  
Pam Motter

**Joe Moorhatch**

By Fred Battles  
Pastor Steve and  
Pam Motter



Special thanks to the many staff who purchased gifts for residents in the Households and Personal Care. Your generosity



**Nancy Grove Nichols**

By Sandy and Jim  
Wickard

**Savilla Pavlasek**

By Ralph and Donna  
Littlefield  
Russ and Sharon  
Hines

**Anna Peachey**

By Wilmer Harris  
Pastor Steve and  
Pam Motter  
Vaheedha Prabhakher  
Darrel and Margaret  
Knepper  
Noma Bowman  
Mary Lou Ruegg

**Barbara Reisinger**

By Pastor Steve and  
Pam Motter

**Malcolm and****Helen Sawyer**

By Ellen Harles

**Ruth Shenk**

By Karen Shenk and  
Ginny Hess

**Jane Sheriff**

By John Sheriff  
Pastor Steve and  
Pam Motter  
Steve and Barbara Fry  
Wilmer Harris  
Ed and Bev Wible

**Mary Lou Sievers**

By Dave and Lynn  
Kennaly

**Edna Simoncek**

By Ed Simoncek

**Dorothy Slothower**

By Pastor Steve and  
Pam Motter

**Kathryn Smith**

By Pastor Steve and  
Pam Motter  
Connie and Ronald  
Tate  
Joe and Martha Kugle

**William Spengler**

By Ron and Patti  
Kutz  
Pastor Steve and  
Pam Motter  
Michael Spengler  
Peggy Nitkiewicz  
Donald and Joyce  
Widener

**Jean W. Taylor**

By Barry and Fay  
McCleaf

**Patricia Teitrick**

By Pastor Steve and  
Pam Motter

**Vicki Tinnes**

By Bill and Pam Lord

**Clarence Tosten**

By Pastor Steve and  
Pam Motter

**Kay and Alex**

**Touloumes, Sr.**  
By Susan Skilton

**Gerry Trump**

By Dolly Group  
Kitty Forrest  
Frank and Betty  
Lou Zary  
Judy McCulloh  
Pastor Steve and  
Pam Motter

**Gerry and Charles  
Trump**

By David and Judy  
Trump  
Doug and Debby  
Trump

**Elaine Ulrich**

By Mary Lou Kepner  
Patrick and Leslie  
McBane

**Rev. and Mrs. L.R.  
Van Horn**

By Samuel Dittmar

**Betty Lou Washburn**

By John Washburn

**Martha Weary**

By Ralph and  
Donna Littlefield

**Ethel Weibley**

By Doc & Cathy  
Weibley & Family

**Marilyn Whittington**

By Pastor Steve and  
Pam Motter

**Bertie Wise**

By Jane Steinour

**Shirley Zerbe**

By Pastor Steve and  
Pam Motter

**IN HONOR OF...****Marcella Albert**

By Anonymous

**Frank Burrows**

By John and Sue  
Hendrickson

**George Dolheimer**

By Mark Dolheimer

**Jonathan L. Doty**

By Carol Bishard

**Friendship Circle  
Staff**

By Dave and  
Gretchen Runkle

**Martha Loy**

By Doc & Cathy  
Weibley & Family

**Keith and Marilyn  
McDanel**

By Elaine Whiteman

**Linda McKelvey**

By Chicora Alliance  
Church

**Pastor Steve Motter**

By Carol Bishard

**Dr. Lewis Patterson**

By Bert and Lynn  
Alber

**Kent Peachey**

By Carol Bishard

**Grace Shupp**

By Lee and Lucille  
McNair  
Connie Tate

**Linda Slusser**

By Dolly Group

**The Entire Staff of  
Chapel Pointe**

By Steve and Judy  
Huntzinger



**"Seasons"** is a publication  
of the Development  
Office of Chapel Pointe at  
Carlisle.

**MISSION STATEMENT:**

Chapel Pointe at Carlisle is a  
continuing care retirement  
community of The  
Christian and Missionary  
Alliance. Our mission is  
to provide comfortable  
retirement living and  
quality care and services  
for each resident within a  
secure, Christian, family-  
like environment.

**DIRECT COMMENTS TO:**

**Jonathan L. Doty**  
Director of Development  
and Outreach

*We apologize for any  
errors and would like to  
make it right. Please send  
corrected information to:*

Attn: Jonathan Doty  
Chapel Pointe  
770 S. Hanover St.  
Carlisle, PA 17013

or [jdoty@chapelpointe.org](mailto:jdoty@chapelpointe.org)



ensured that everyone got to open a personalized Christmas present!

**JOIN THE MISSION TODAY**

Your gifts make a  
difference today  
and for generations  
to come. Honor  
or remember

someone who has impacted you  
by making a life-changing donation  
to Chapel Pointe. To give, use the  
enclosed envelope, visit  
[www.ChapelPointe.org/donate](http://www.ChapelPointe.org/donate),  
or scan the QR code.



770 South Hanover Street  
Carlisle, PA 17013  
(717) 249-1363  
[www.ChapelPointe.org](http://www.ChapelPointe.org)

Non-Profit Org.  
U.S. Postage  
PAID  
Carlisle, PA  
Permit No. 485

**Return Service  
Requested**

*Chapel Pointe at Carlisle, PA, is a non-profit tax-exempt organization under IRC 501(c)(3). Donations to Chapel Pointe at Carlisle qualify as charitable donations.*



**We're excited to introduce a new way for you to support Chapel Pointe residents!**

**In addition to giving toward benevolence, you can now choose to fund our Wish List — thoughtfully curated to enhance residents' dignity, opportunities, and overall well-being. Wish List donors will be recognized by name in the Seasons newsletter, celebrating your generosity.**

**Any excess funds given toward activities or upgrades on the Wish List will directly benefit residents, ensuring every dollar makes a difference.**

**Join us in creating meaningful moments. Use the enclosed pink envelope to give toward the Wish List today!**